

An isometric line drawing of a cabinet structure, showing the internal framework and the outer shell. The drawing is composed of thin, light-colored lines on a solid light orange background. It depicts a cabinet with a top, a front panel, and a side panel, with internal shelves and drawers visible.

SMART

CABINETS[®]

2011 Cabinet Specifications Guide

www.SmartCabinetry.com

Certificate of Ownership

is hereby proclaimed by

Smart Cabinetry

We are humbled and thank you in your decision to choose our cabinets. Competition among cabinet companies throughout the world is fierce; and in spite of these conditions Smart Cabinetry has made progress due to its advanced management philosophy, designed to ensure a better future for its customers. Smart Cabinetry is growing into a brand appreciated by its customers because it is continuously striving to achieve the single goal of making good quality products with an emphasis on our customer. Our management philosophy is simple; trust and a hands-on approach are at the core of our business. We strive to be the *best*, which is only possible if our customers we value, our communities we live, the environment we operate, and our facilities where we manufacture are in balance. Smart Cabinetry has continued to engage in environmental activities such as the use and development of environmentally friendly technologies and clean production. Additionally, Smart Cabinetry is continuously striving to fulfill its responsibility as a good 'citizen' - through organizational contributions to the communities we serve. Our values have not changed yet they continue to evolve with you, our customer.

Our pledge to you is to manufacture cabinets under our guiding principles:

INTEGRITY. The foundation for all that we do. Integrity includes honesty, decency, consistency, and courage. We are committed to building on these values. **DIALOGUE.** We will listen carefully to diverse points of view and engage in thoughtful dialogue. We will broaden our understanding of issues in order to better address the needs and concerns of our customers and each other. **TRANSPARENCY.** We will ensure that information is available, accessible, and understandable. **SHARING.** We will share knowledge and technology to advance our understanding, to improve our products and the environment. **BENEFITS.** We will use sound and innovative manufacturing practices and thoughtful and effective stewardship to deliver high-quality products that are beneficial to our customers and to the environment. **RESPECT.** We will respect the religious, cultural, and ethical concerns of people throughout the world. The safety of our employees, the communities where we operate, our customers, consumers, and the environment will be our highest priority. **ACT AS OWNERS TO ACHIEVE RESULTS.** We will create clarity of direction, roles, and accountability; build strong relationships with our customers and external partners; make wise decisions; steward our company resources; and take responsibility for achieving agreed-upon results. **CREATE A GREAT PLACE TO WORK.** We will ensure diversity of people and thought; foster innovation, creativity and learning; practice inclusive teamwork; and reward and recognize our people.

We will live by our values, have fun, and take pride in what we do. Our values are to maintain a work environment where people enjoy coming to work, to serve and exceed customer expectations, and to be profitable and result oriented.



SMART
CABINERY®

Marlin Miller, CEO

Table of Contents:



Wood and Finish Characteristics	4
Cleaning and Care / Minor Repairs	5-7
Environmental Certifications	8
Finish Availability	9
Cabinet Construction Table	9
Door Styles	10-11
Construction Features / Photos	12
Wall Cabinet Features	13
Base Cabinet Features	13
Tall Cabinet Features	14
Vanity Cabinet Features	14
ANSI / ADA Compliant Cabinet Features	15
Cabinet Dimensions	16
Blind Cabinets: Minimum / Maximum Pulls	17
Wall Cabinets	18
Standard Wall	18-21
Blind Wall	21
Corner Wall	22
Appliance Garages	22
Peninsula Wall	23-24
Microwave Wall	24-25
Open Shelf Wall	26
Wine Rack	26
Wall Organizers	27
Base Cabinets	28
Standard Base	28
Drawer Units	29
Sink Base	29
Base Microwave Cabinets	30
Blind Base	30
Corner Base and Lazy Susan	30-31
Peninsula Base	31
Open Shelf	32
Angled End Base	32
Fronts	33
Tall Cabinets	34
12" Deep Tall	34
24" Deep Tall	35
Tall Fronts	36
Tall Oven Cabinets	36-37
Broom Closets	37
Book Cases	37

Handicap	38
Sink Base (Removable Front)	38
Sink Base (Pocket Door)	38
Wall Hung	38
Vanity Cabinets	40
Standard Vanity	40
16" Deep Vanity	40
Sink Base	40
Sink / Drawer Combo	41-42
Vanity File	42
Standard with Drawer	42-43
Fronts / Knee Drawers	44
Wall Boutique / Tall Linen	44
Accessories	45
Roll out Shelves	45
Pull out Storage	46
Tilt out Sink Tray	46
Waste Bins	46
Toe Kicks / Skins / End Panels	47-48
Fillers / Legs / Brackets / Valances	49
Moulding	50-51
Shelves / Sink Floor	52
Touch up / Tape	52
Cabinet Modification Notes	53-54
Troubleshooting Guide	55
step by step guide available at	
www.smartcabinetry.com/cabinetinstallation	
Frequently Asked Questions	56
Shipping Information	57
Modes of Transportation	58-59
Accessorial Charges	60
Claims Instructions	61
Warranty	62-63

Wood & Finish Characteristics



MAPLE

The maple wood Smart Cabinetry consumes comes from the colder climates of upper Michigan and Pennsylvania yet the components are still manufactured within 25 miles of our plant and delivered daily assuring Smart Customers the whitest of wood without developing stain. Even though it is quick growing, maple's grain is straight, fine-textured and strong, making it as heavy and durable as red oak. Within the grain are variations in color ranging from light to dark reddish brown as well as mineral streaks, swirls and pitch flecks. Over the years, the interaction of sunlight with the oxygen in the wood will give your cabinetry a soft golden glow.



BLACK CHERRY

Smart Cabinetry cherry wood comes from Western Pennsylvania, Michigan, and Canada. Its grain is straight, close, finely textured and gently weaving. Within the wood are wonderful variations in color, ranging from pink, to green, to yellow and brown. There can be mineral streaks, fine pinholes, grain swirls and occasional pitch pockets. The best part of the tree for making furniture is the heartwood, after assembled into cabinetry, cherry heartwood continues to change and darken as UV light interacts with the oxygen in the wood, giving your cabinetry an improving uniform appearance.



NORTHERN RED OAK

Smart Cabinetry receives its red oak wood components and panel products from vendors within 25 miles of our plant and delivered daily. Red oak's grain is quite dominant and varies from straight lines to arched or pointed patterns. Colors in the heartwood range from pink to green as well as from light to dark, whereas the sapwood of red oak is white to light brown. Like so many other woods, the color of red oak cabinetry deepens as the wood interacts with natural light. The wood is similar in general appearance to white oak, but with a slightly less pronounced figure due to the smaller rays.

SMART WOOD FINISHES

The coatings applied to finish your cabinet consist of LOW VOC environmentally benevolent raw materials. All top coats and stain coatings applied at Smart Cabinetry or purchased components to finish your cabinets meet and exceed Green Guard Emission Standards. In addition to our environmental stewardship, Smart Cabinetry Coatings have a high degree of durability and resistance to lasting stains due to spills or moisture. Our coatings offer above industry abrasion, chemical, impact and scratch resistance to complement a long list of advantages. The coatings used at Smart Cabinetry require far less floor space; create less waste, use less energy, which ultimately allow us to continue our mission to deliver above industry value at affordable prices. Naturally, however, your choice of wood species will

have the most impact on the cabinet's final appearance, because wood grain and natural characteristics will show through stain colors and gloss. Color stains will render the actual color of the cabinet, bring out the natural beauty of the wood, and amplify those inherent "character marks". Using a color stain on the wood may produce different color variances. Softer areas of the wood and end grain surfaces will accept more stain and often appear darker than other areas. Potential "natural" variances in color cannot be controlled even with the latest technology in diamond tooling and sanding in multiple stations through our facility. Differing densities inherently create different effects regardless of the hours expended selecting only the finest hardwoods. For additional information regarding the coatings used at Smart Cabinetry, please consult www.smartcabinetry.com.



SMART START

Once installed, it is tempting to immediately begin by putting items in drawers and cabinets. You would like to use your beautiful new cabinets, however, we suggest you do the following first:

With a damp (not wet) soft cloth, wipe down all the cabinetry, including the inside of drawers, cabinets, and all hardware. Use an additional clean soft cloth to dry. If you use a glass cleaner on any glass doors, be sure to protect the wood surfaces as ammonia in the glass cleaner can damage the finish on your cabinets. Whenever possible, it is best to remove the glass from the cabinet in order to clean it.

Once you've wiped down your cabinets, you can polish the doors, drawers and front frames with a good quality furniture polish that does not contain silicone, ammonia, or an alkaline based polish. Buff the polish with a soft cloth to maintain the furniture quality finish.

Because your cabinets have both water resistant powder coated shelving and laminated interiors, you do not need to line them with shelf paper. Instead, wipe them with a soft cloth in the same way that you wipe down the exteriors.

If you have any questions about installation, features, options or your cabinets, contact your dealer/installer immediately. It's always easier to take care of the questions early, rather than after you've had the cabinets for several months.

SMART CARE

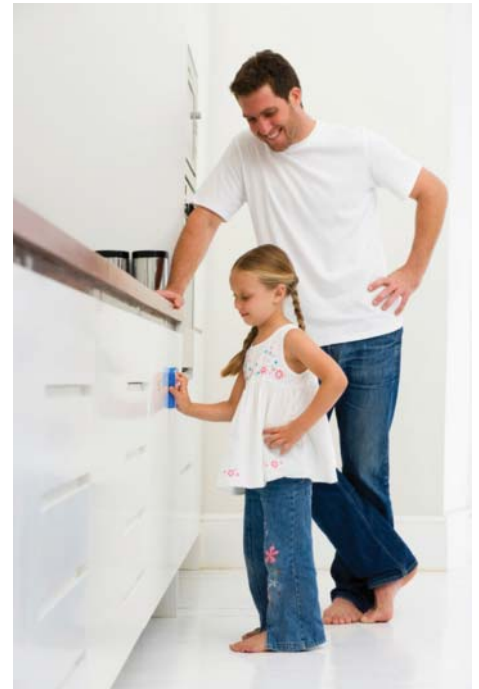
Smart Cabinetry uses only the finest of materials and process during the manufacturing and assembly of your cabinets. Raw materials like powder coated finishes, laminates, diamond tooling and high solid coatings assure our customers a quality cabinet upon arrival. Unfortunately, over time in our every day lives accidents do and will occur. When they do occur, like any fine-quality furniture surface, your cabinets should be treated as such, please understand the SMART Guide below. A thorough understanding is necessary to increase the life or maintain the beauty of your cabinets.

- **DO NOT** allow water, chemicals (alkaline-based detergents, ammonia, vinegar, or abrasive cleaning products), and hot or acid food spills to set on your cabinets.
- **ALWAYS** immediately, wipe up spills as quickly as possible. Prolonged exposure to spills, including food, water or other liquids, or to oil and grease splatters, can cause permanent discoloration or damage to your cabinets.
- **ALWAYS** use a soft cloth. **DO NOT USE** coarse or abrasive cloths or materials as they may dull the finish or leave scratches that cannot be removed. **DEFINITELY AVOID** soap pads, scouring pads and brushes.

The cabinetry you have selected has its own personality and character, as well as a richness and depth in its color and grain. You may notice the variations in the grain and color of your cabinet if you have selected a natural or light finish. Variations will be less apparent with darker stains. Your Cabinets have been constructed from carefully selected quality hardwoods. Because imperfections are part of the natural beauty of hardwood, and not the result of the manufacturing of your cabinets, your warranty cannot cover differences in color, grain and other natural variations. Nor can it cover possible differences in color when adding new cabinetry to old. We encourage you to enjoy the natural beauty of solid wood and appreciate those characteristics that give it personality.

Cleaning & Care

- **DO NOT USE** ammonia, products that contain ammonia, strong solvent cleaners, mineral spirits, paint thinner or any other harsh cleaning chemicals when cleaning our cabinets.
- **DO NOT USE** wax or a polish that contains silicone. Wax builds up on the surface and causes yellowing; silicones smudge and highlight fingerprints, and can be removed only with extreme measures.
- **DO** clean with a soft cotton cloth dampened with warm water is usually sufficient to clean your cabinets. If more thorough cleaning is required, use one of the following cleaning solutions: A fresh solution of dishwashing liquid mixed with warm water, or a mild all-purpose cleaner. Make sure either does not contain ammonia or silicone and is wiped up immediately. Use the mildest cleaning solution that will successfully clean your cabinets. Stronger products may damage or discolor your cabinet finish and are not recommended. After cleaning, wipe all surfaces with a clean, damp cloth. Dry immediately, using another soft, clean cloth.
- **ALL** drawer guides, glides, and pull out trays are rated for different weight capacities. Periodically check to make sure that you are not placing too heavy a load on shelves and drawer bottoms. This is especially important with pull out trays, slide out drawers, Lazy Susan's, and any place where heavy or unbalanced loads can shorten the life expectancy of the moving or mechanical parts.
- **Avoid Moisture Damage.** Avoid draping damp clothes or dishtowels over cabinet doors. This moisture can cause permanent damage — such as peeling and discoloration — to the cabinet's finish.
- **Avoid Heat Damage.** The heat generated when using an oven's self-cleaning feature is much greater than during normal cooking. If this heat escapes from the oven, it can damage your cabinets. While this is a rare circumstance, you can minimize the risk of cabinet damage by removing cabinet doors and drawers nearest the oven before using its self-cleaning feature.
- **Cleaning Glass Doors.** Extra care is required when cleaning glass doors. Spray an ammonia-free glass cleaner on a clean, soft, lint-free cloth or paper towel. Do not spray cleaner directly on the glass. It could seep behind the window dividers and cause damage.
- **Consider window treatments** that block direct sunlight exposure on your cabinetry, thereby minimizing color changes in the finish. This is especially important if you intend to add cabinets at a later date.
- **Regular Dusting is permissible,** a soft lint-free cotton cloth for regular dusting is recommended. Packaged dusting sheets are not required or recommended. Do not use pre-moistened dusting sheets, and do not use aerosol products made for dusting.



Cambridge shown in Honey stain



Cambridge shown in Pecan stain

Minor Repairs



From time to time you may encounter some unavoidable situations that create minor problems with your cabinetry. Before calling your dealer/installer for help, consider the following:

Wipe up spills as quickly as possible so they won't damage the wood. Clean your cabinetry with a damp, soft cloth and wipe dry. Apply a light coat of high quality furniture polish if you must. Be sure it does not contain silicone, ammonia, alkaline, or other solvent chemicals.

Minor scratches or dents in your cabinetry can be treated with a touchup kit. See your dealer if you have not already ordered one. For major damage like severe scratching, broken doors or drawers, paint spills, etc., call your dealer for help or replacement.

If over time screws become loose on hinges or drawer pulls, you can achieve a temporary fix by gluing a small diameter dowel rod into the hole using a high quality wood glue. Cut the dowel rod flush with the top of the screw hole and place into the hole.

Let the glue dry and then replace the screw. Do not over torque the screw, or you will risk stripping it out again.

Minor door alignment can be corrected by adjusting the hinges. Generally, when you open the cabinet door, you will find the side-to-side adjustment slot on the door part of the hinge and the up and down adjustment on the frame portion of the hinge.

Minor roughness in end grain can be corrected with "light weight sanding paper" and top coat. If concerned please call distributor.

In most cases your cabinetry hardware is protected by our five year guarantee from the hardware manufacturer. For hinges and hardware that do not work properly, contact your dealer for assistance.

Consider window treatments that block direct sunlight exposure on your cabinetry, thereby minimizing color changes to the finish. This is especially important if you intend to add on additional cabinetry at a later date.

When adding additional cabinetry in the same room at a later date, consider the following techniques that may help minimize the color differences between the old and the new units. Place the new cabinetry on a different wall so any color difference won't be as noticeable. Replace existing trim and molding with darker/lighter wood to give the old and new cabinets a unified look. Experiment with multiple finishes in the same wood species.

Additional information may be found on Smart Cabinetry's website at www.smartcabinetry.com.



Dover shown in Cinnamon stain



Newport with Polar White finish

Environmental Certifications



Smart Certifications

Smart Cabinetry's commitment to the environment and independent 3rd party verification of its manufacturing processes is without equal in our industry. We do not need a sticker to tell you we do it right for the right reason it is fundamental from within and our core belief. A look below should give you an idea of our commitment to the environment, our people, and the communities we serve. Rivalled by few, matched by no one, "unmistakably Smart". Further information may be obtained at www.smartcabinetry.com.



FSC certification is a voluntary, market-based tool that supports responsible forest management worldwide. FSC certified forest products are verified from the forest of origin through the supply chain. The FSC label ensures that the forest products used are from responsibly harvested and verified sources.

Smart Cabinetry is a proud member of the USGBC and contributes too many LEED points towards LEED Building Projects across America.

The Washington, D.C.-based U.S. Green Building Council (USGBC) is a 501 c3 non-profit organization committed to a prosperous and sustainable future for our nation through cost-efficient and energy-saving green buildings.



USGBC is the driving force of an industry that is projected to contribute \$554 billion to the U.S. gross domestic product from 2009-2013. USGBC leads an unlikely diverse constituency of builders and environmentalists, corporations and non-

profit organizations, elected officials and concerned citizens, and teachers and students. Buildings in the United States are responsible for 39% of CO2 emissions, 40% of energy consumption, 13% water consumption and 15% of GDP per year, making green building a source of significant economic and environmental opportunity. Greater building efficiency can meet 85% of future U.S. demand for energy, and a national commitment to green building has the potential to generate 2.5 million American jobs.



Cabinets that comply and bear the KCMA certification seal are recognized in the marketplace as a quality product able to perform after a rigorous battery of tests simulating years of typical household use. Tests are performed by approved third-party independent laboratories. Samples for testing are selected in an unannounced visit to the manufacturing plant.



The Kitchen Cabinet Manufacturers Association developed the Environmental Stewardship Program (ESP) to encourage practices that benefit the environment and society. The voluntary program gives cabinet manufacturers a way to demonstrate their commitment to sustainability and helps you identify products that are better for your home, your family and the environment.



Composite Wood Panels CPA's EPP Downstream Program is an easy way for consumers to identify environmentally responsible products. Products carrying the EPP Downstream logo were manufactured by a company that has demonstrated their environmental commitment by purchasing at least 50% CPA EPP certified composite wood products. Smart purchases at a 95% and greater level.



NTA, Inc. is a leader in building component testing and evaluation, and has considerable expertise in accurate and reproducible analysis of the new low-VOC coatings. We specialize in paints and coatings for the building industry. Our certification engineers in conjunction with our green building professionals have developed an "Approved Green" certification so that manufacturers can confidently market their low-VOC coatings and sealants to engineers and architects looking for products that can contribute to green building standard points.



Finish Availability



	Bridgeport	Newport	Somerset	Hampton	Dover	Oxford	Brighton	Sheffield	Pfeescott	Manhattan I	Manhattan II	Manchester	Bradford	Cambridge	Lancaster	Chateau	Providence
Polar White	•	•															
Belgian			•	•													
Spice					•	•											
Cinnamon					•	•											
Ginger							•	•	•	•	•	•	•	•	•	•	•
Honey							•	•	•	•	•	•	•	•	•	•	•
Camel							•	•	•	•	•	•	•	•	•	•	•
Chestnut							•	•	•	•	•	•	•	•	•	•	•
Merlot							•	•	•	•	•	•	•	•	•	•	•
Pecan					•	•	•	•	•	•	•	•	•	•	•	•	•
Coffee					•	•	•	•	•	•	•	•	•	•	•	•	•
Chocolate Glaze												•	•				

Cabinet Construction Table

	Particleboard	Plywood	Smart PLY A	Smart MAX	SMART Ultimate	Smart Severe Use (Certified)
5/8" Dovetail plywood drawers	•	▲	▲	▲	▲	
Laminate interior and exterior sides	•	▲	▲	▲	▲	
Laminated MDF drawer bottoms	•	▲	▲	▲	▲	
3/4" powdercoat shelving	•	▲				
Powdercoat sink floors	•	▲				
Plywood construction		▲	▲	▲	▲	▲
3/4" plywood shelving			▲	▲	▲	
Plywood sink floors			▲	▲	▲	▲
Treated 3/4" ACQ toe kick				▲		
Treated 2x6 ACQ base perimeter					▲	▲
Finished veneer drawer bottoms						▲
Finished veneer interior and exterior sides						▲
Plywood slab door (9-ply) with tapered edge						▲
Integrated 1/2" plywood shelving (fixed)						▲

Standard • Upgrade ▲



Treated 2x6 ACQ base perimeter (ultimate & certified)



Smart Ultimate Cabinet

Smart Cabinetry Door Styles



Sheffield shown in Ginger

Cambridge shown in Ginger

1/2" Standard Overlay

In Standard Overlay door styles, the door and drawer front partially reveals the face frame of the cabinet all around the parameter of the door and drawer. Standard Overlay construction has a 1/2" opening between the door and drawer for easy access without the need for door/drawer hardware.

Full Overlay

In Full Overlay door styles, the door and drawer front reveals 1/4" of face frame of the cabinet on the sides of the door and drawer. Full Overlay construction has a 1/2" opening between the door and drawer for easy access without the need for door/drawer hardware.



Providence shown in Ginger

Chateau shown in Ginger

Solid / Routed One Piece

Chateau	Maple (Standard Overlay)
Providence	Maple (Standard Overlay)
Newport	Polar White Finish (Full Overlay)
Bridgeport	Polar White Finish (Standard Overlay)

- Routed One Piece Door
- Solid Slab Door Front (Providence)
- Shaker Styling (Newport)
- Raised Panel Styling (Chateau, Bridgeport)
- Solid Slab Drawer Front
- Reversed Bevel Edge
- Decorator Hardware not Required



Newport in Polar White



Bridgeport shown in Polar White

*9" wide cabinets include slab doors.



Brighton shown in Camel

Flat Panel Door Style

Dover	Red Oak (Standard Overlay)
Brighton	Maple (Standard Overlay)

- Mortise & Tenon Door Frame
- Veneer Flat Panel Inset Into Frame
- Solid Slab Drawer Front
- Reversed Bevel Edge
- Decorator Hardware not Required



Oxford
shown in Pecan

Raised Panel Door Style

Oxford	Red Oak (Standard Overlay)
Prescott	Maple (Standard Overlay)
Lancaster	Maple (Full Overlay)
Hampton	Cherry (Full Overlay)

- Mortise & Tenon Door Frame
- Veneer Raised Panel (Oxford, Prescott, Lancaster)
- Solid Raised Panel Inset into Frame (Hampton)
- Solid Slab Drawer Front
- Reversed Bevel Edge
- Decorator Hardware not Required



Sommerset
shown in Belgium

Shaker Door Style

Sheffield	Maple (Standard Overlay)
Cambridge	Maple (Full Overlay)
Sommerset	Cherry (Full Overlay)

- Mortise & Tenon Door Frame
- Veneer Flat Panel Inset Into Frame (Sheffield, Cambridge)
- Reversed Raised Panel Inset into Frame (Sommerset)
- Solid Slab Drawer Front
- Reversed Bevel Edge
- Decorator Hardware not Required



Manchester
in Honey Glaze

Bradford
shown in Honey Glaze

Mitered Door Style

Manchester	Maple (Standard Overlay)
Bradford	Maple (Standard Overlay)

- Mortise & Tenon Door Frame
- Veneer Flat Panel Inset Into Frame (Manchester)
- Raised Panel (Bradford)
- Mortise & Tenon Door Frame Drawer Front
- Door available in a chocolate glaze. (Glaze not available on moldings and accessories)



Manhattan I
shown in Chestnut

Slab Door Style

Manhattan I	Maple (Standard Overlay)
Manhattan II	Maple (Full Overlay)

- Veneer Slab Door and Drawer Front
- Square Veneered Edge

Standard Construction Features



6-way Adjustable hinges
(standard overlay detail)



6-way Adjustable hinges
(full overlay detail)



Plywood Dovetail Drawers



Adjustable shelves



Particleboard construction
(back detail)



Particleboard construction
(side detail)



I-beam Construction



Water Resistant Flooring
(All vanities and sink base vanities)

Upgraded Construction Features



Plywood option
(back detail)



Plywood option
(side detail)



Full Extension Soft Close
(inside detail)



Full Extension Soft Close
(underside detail)



Sidemount Ballbearing
(75 lb slide)



Sidemount Ballbearing
(extends fully)

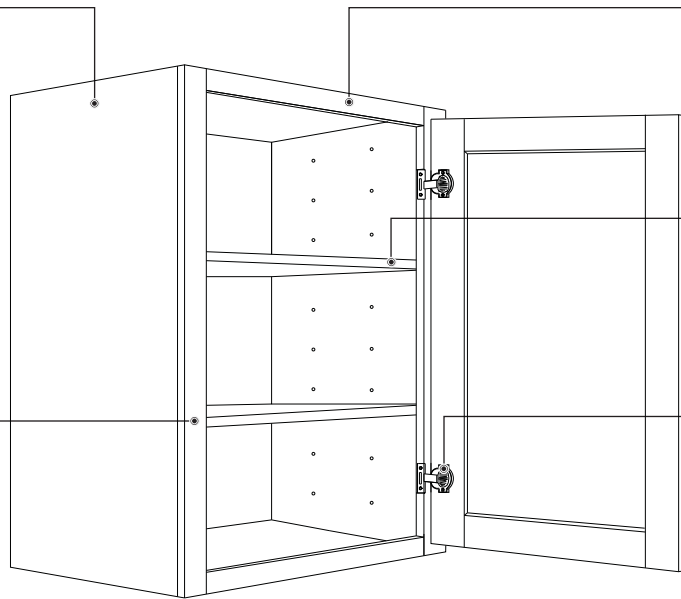
Wall Cabinet Features



***End Panels**
 1/2" substrate with light maple wood grain interior matching laminate exterior.

***Back**
 1/2" woodgrain laminate rabbeted into ends, glued and stapled to top and bottom with industrial grade hot melt glue.

Frames
 3/4" thick and 1 1/2" wide, kiln-dried hardwood assembled under pressure with screws. Offers maximum strength and squareness.



***Tops and Bottoms**
 1/2" substrate with light maple wood grain interior and exterior.

Adjustable Shelves
 3/4" Full depth MDF with a powder coated finish with Teflon additive. Attached with locking shelf clips.

Hinges
 6-way adjustable, self-closing concealed hinges.

*Part included with plywood upgrade (see page 9 for additional upgrades)

Increase Depth Cabinets MUST be installed between cabinets or end panels of the same depth.

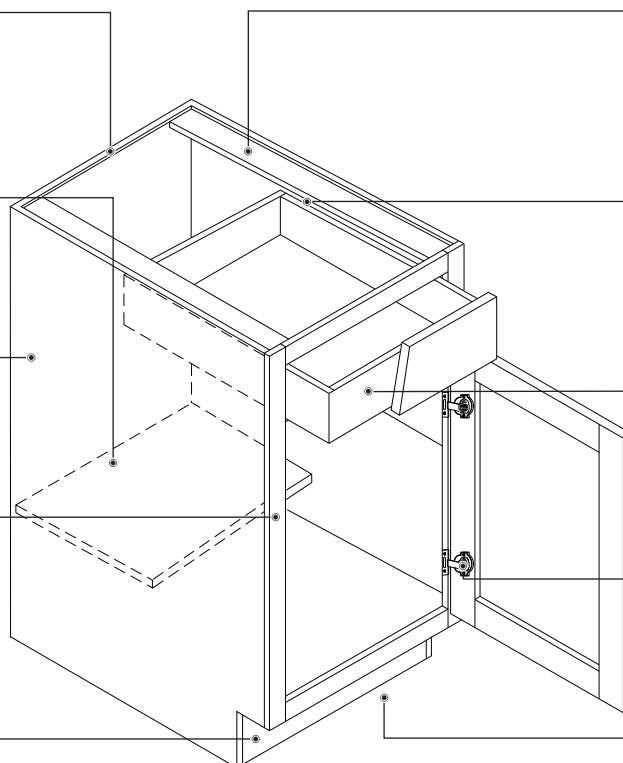
Base Cabinet Features

***Back**
 1/2" woodgrain laminate rabbeted into ends, glued and stapled to top and bottom with industrial grade hot melt glue.

Adjustable Shelves
 3/4" Half depth MDF with a powder coated finish with Teflon additive.

***End Panels**
 1/2" substrate with light maple wood grain interior matching laminate exterior.

Frames
 3/4" thick and 1 1/2" wide, kiln-dried hardwood assembled under pressure with screws. Offers maximum strength and squareness.



***Braces**
 Full depth braces provide I-beam stability and convenient anchor points for counter tops.

Drawer Guides
 Features captive roller, (75lb) epoxy-coated stay-closed side guides.

Drawers
 5/8" plywood dovetail drawers, featuring four-sided construction and captive 1/4" matching laminate bottom.

Hinges
 6-way adjustable, self-closing concealed hinges.

***Toe Kicks**
 4 1/2" toe kicks with 3 1/2" inset on all standard base cabinets.

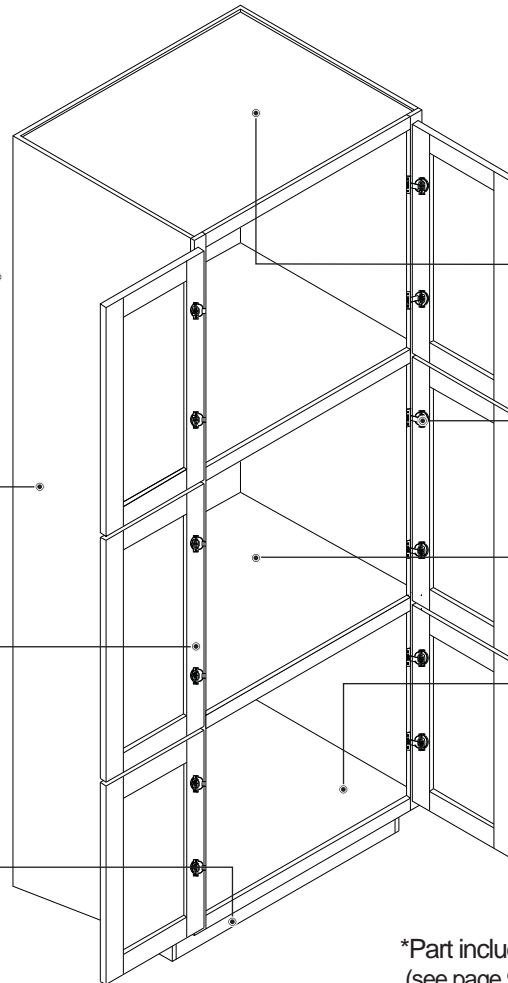
***Bottoms**
 1/2" substrate with light maple wood grain interior.

*Part included with plywood upgrade (see page 9 for additional upgrades)

Tall Cabinet Features



- *Back
1/2" woodgrain laminate rabbeted into ends, glued and stapled to top and bottom with industrial grade hot melt glue.
- *End Panels
1/2" substrate with light maple wood grain interior matching laminate exterior.
- Frames
3/4" thick and 1 1/2" wide, kiln-dried hardwood assembled under pressure with screws. Offers maximum strength and squareness.
- *Toe Kicks
4 1/2" toe kicks with 3 1/2" inset on all standard base cabinets.

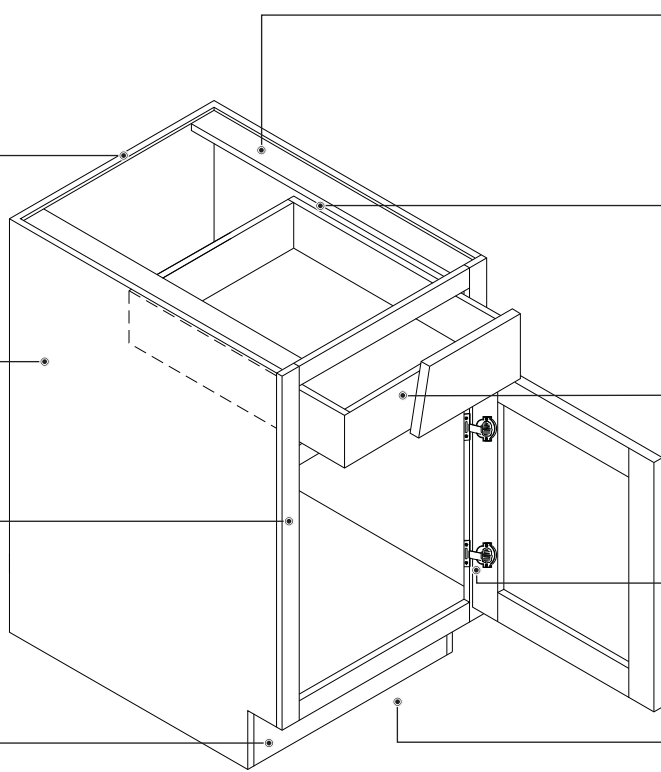


- *Tops
1/2" substrate with light maple wood grain interior and exterior.
- Hinges
6-way adjustable, self-closing concealed hinges.
- Shelves
3/4" fixed shelves are included. Additional kits may be ordered.
- *Bottoms
1/2" substrate with light maple wood grain interior.
- Matches base cabinet door height. (28")

*Part included with plywood upgrade (see page 9 for additional upgrades)
**Shelf kits not included

Vanity Cabinet Features

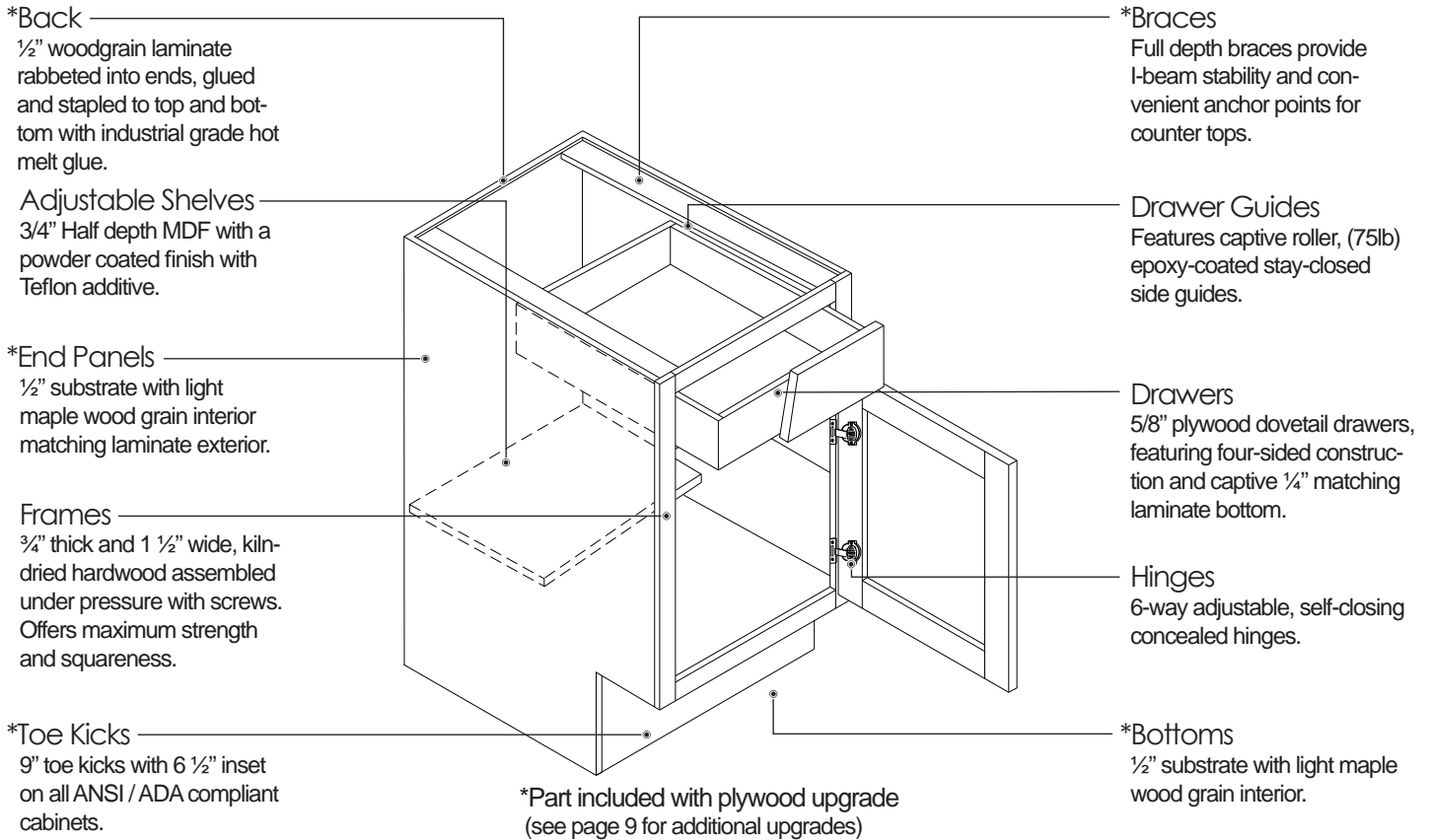
- *Back
1/2" woodgrain laminate rabbeted into ends, glued and stapled to top and bottom with industrial grade hot melt glue.
- *End Panels
1/2" substrate with light maple wood grain interior matching laminate exterior.
- Frames
3/4" thick and 1 1/2" wide, kiln-dried hardwood assembled under pressure with screws. Offers maximum strength and squareness.
- *Toe Kicks
4 1/2" toe kicks with 3 1/2" inset on all standard base cabinets.



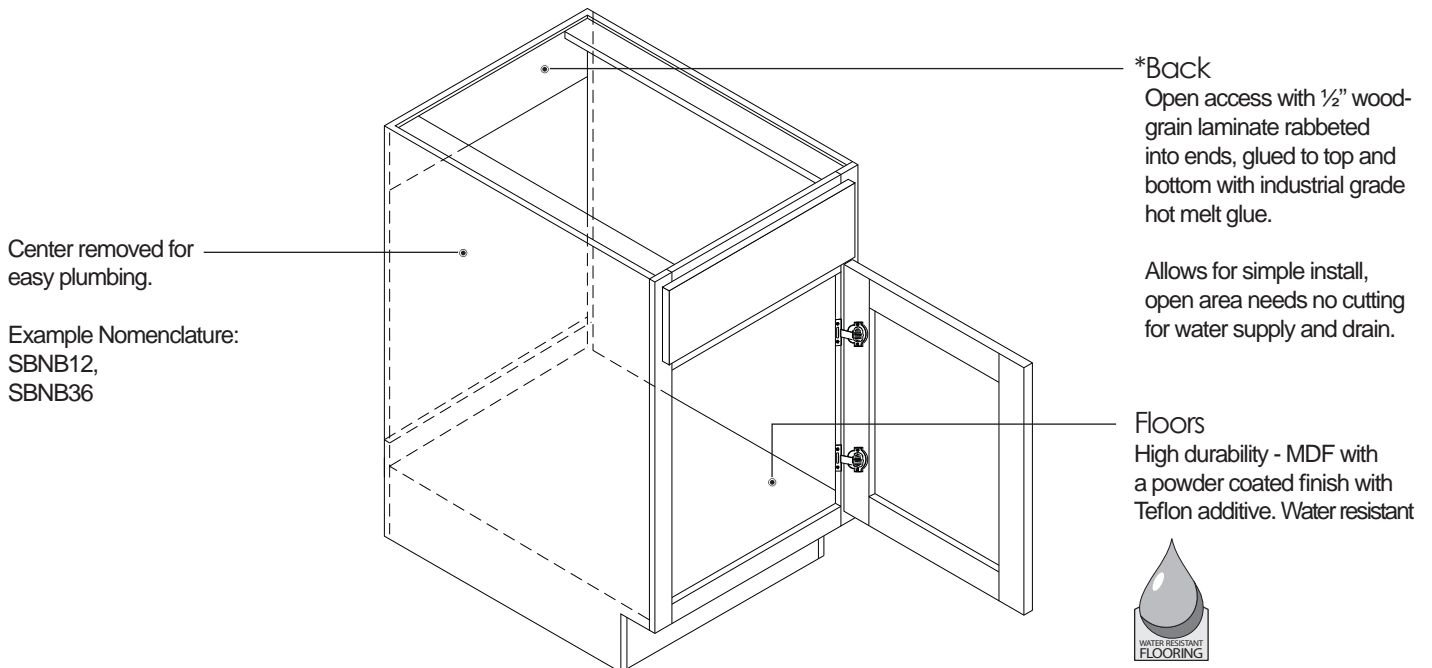
- *Braces
Full depth braces provide I-beam stability and convenient anchor points for counter tops.
- Drawer Guides
Features captive roller, (75lb) epoxy-coated stay-closed side guides.
- Drawers
5/8" plywood dovetail drawers, featuring four-sided construction and captive 1/4" matching laminate bottom.
- Hinges
6-way adjustable, self-closing concealed hinges.
- *Bottoms
1/2" substrate with light maple wood grain interior.

*Part included with plywood upgrade (see page 9 for additional upgrades)

ANSI / ADA Cabinet Features (Handicap Accessible)

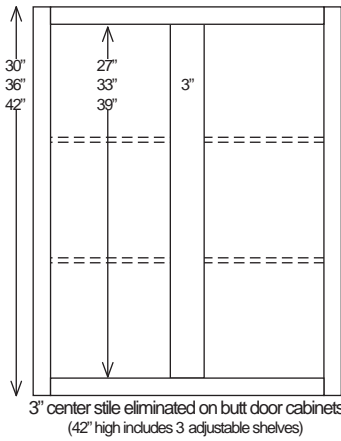


Sink Base Cabinet Optional Features

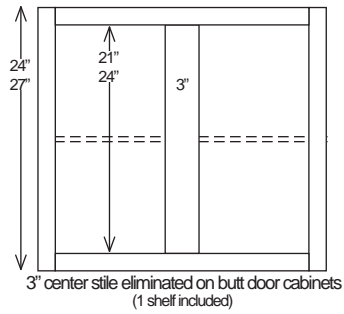


Cabinet Dimensions

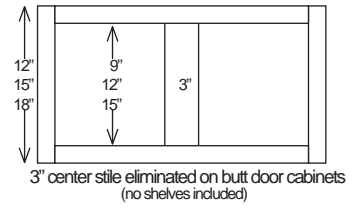
Wall Cabinet



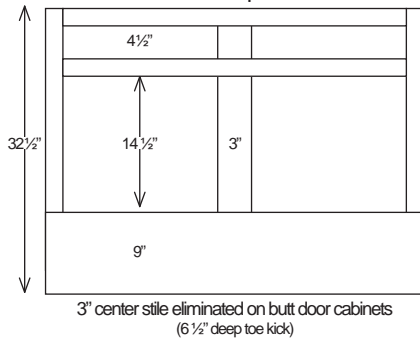
Wall Cabinet



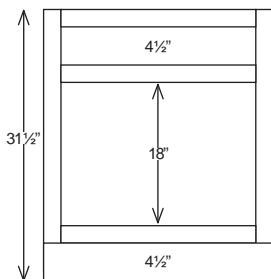
Wall Cabinet



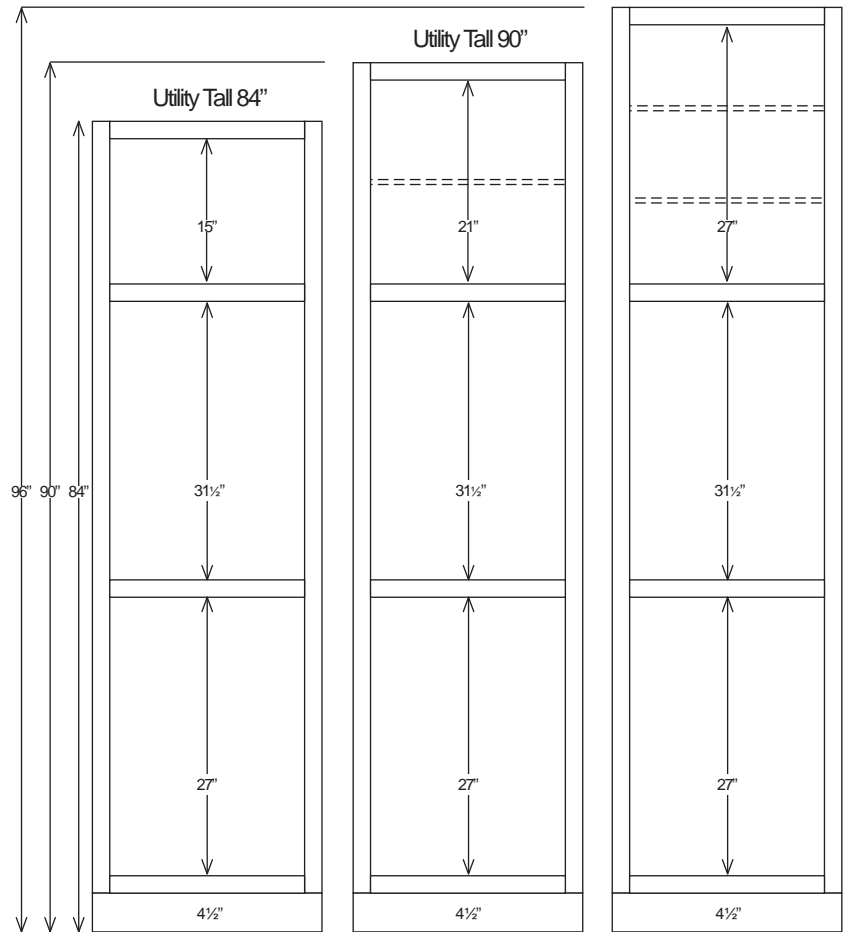
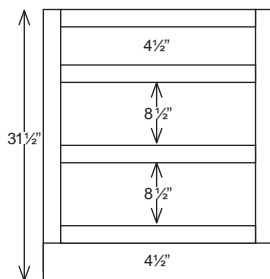
Handicap
ANSI/ADA Compliant Cabinet



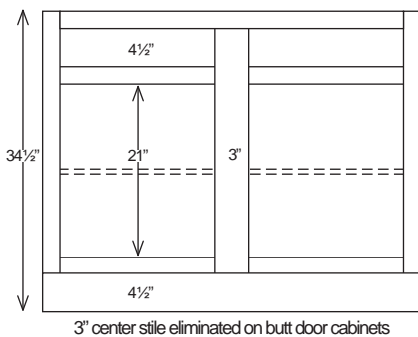
Vanity Base



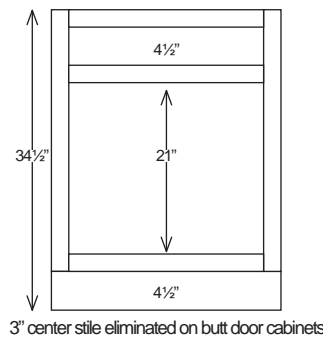
Vanity Base Drawer



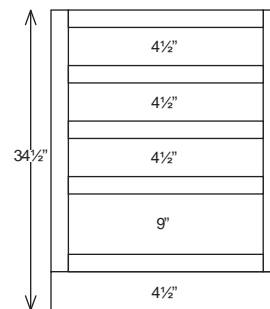
Base Cabinet



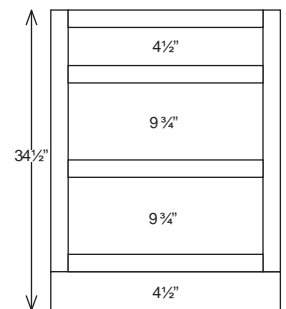
Base Cabinet Butt Door



Base 4 Drawer



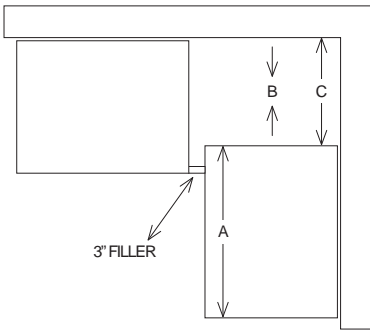
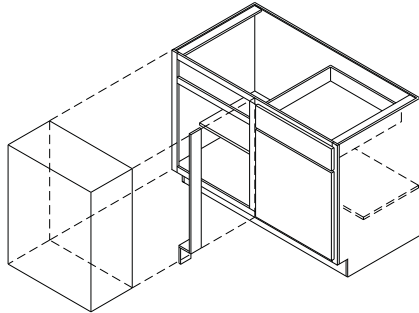
Base 3 Drawer



Blind Cabinets: Minimum / Maximum Pull Distance



Reversible Blind Bases



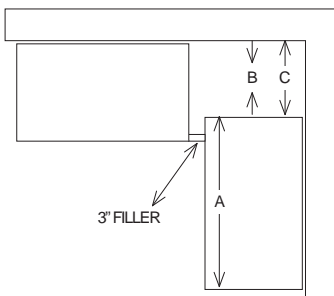
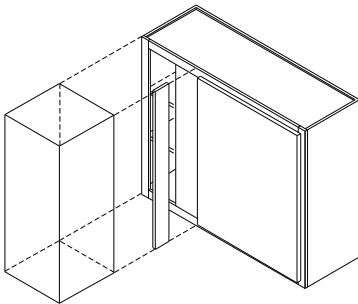
	A	B	C	Standard Door	Full Overlay Door
BBC33	21"	9 3/4"	16 1/2"	7"	8 1/2"
BBC36	25"	11"	14 1/2"	9"	10 1/2"
BBC39	30"	8 1/2"	12"	11 1/2"	13"
BBC42	36"	5 1/2"	9"	14 1/2"	16"
BBC45	42"	3"	6"	17 1/2"	19"
BBC48	45"	1 1/2"	4 1/2"	19"	20 1/2"

- A = Cabinet Width
- B = Minimum Pull
- C = Maximum Pull

NOTES

- Order filler separately.
- Reversible for left or right.
- If hardware applied, pull 1" over minimum space.

Reversible Blind Walls



	A	B	C	Standard Door	Full Overlay Door
WBC24	23"	1"	5"	10"	11 1/2"
WBC27	26"	1"	5"	13"	14 1/2"
WBC30	29"	1"	5"	16"	17 1/2"
WBC33	32"	1"	5"	19"	20 1/2"
WBC36B	35"	1"	5"	11"	11 3/4"
WBC39B	38"	1"	5"	12 1/2"	13 1/4"
WBC42B	41"	1"	5"	14"	14 3/4"
WBC45B	44"	1"	5"	15 1/2"	16 3/4"
WBC48B	47"	1"	5"	17"	17 3/4"

- A = Cabinet Width
- B = Minimum Pull
- C = Maximum Pull

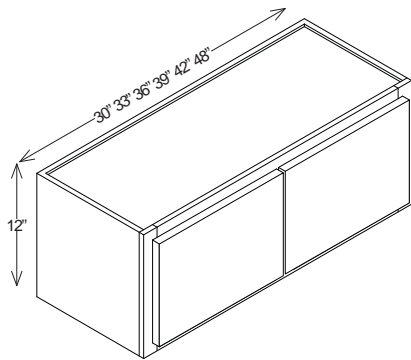
NOTES

- Order filler separately.
- Reversible for left or right.
- If hardware applied, pull 1" over minimum space.

Wall Cabinets

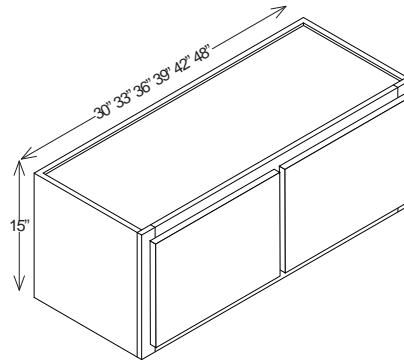
WALL

12" High Wall Cabinets



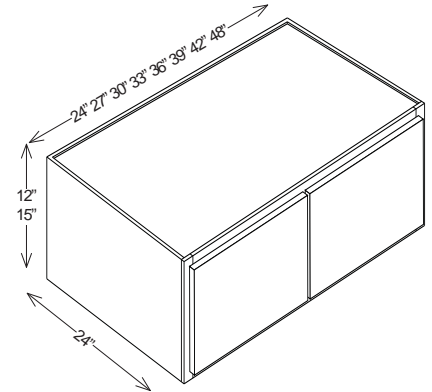
12" High Double	
W3012B	W3912
W3312B	W4212
W3612B	W4812B (4 door)

15" High Wall Cabinets



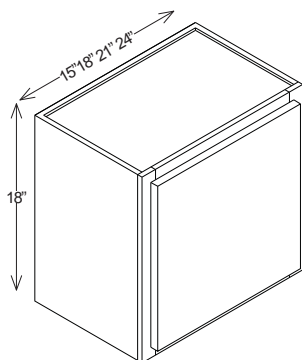
15" High Double	
W3015B	W3915
W3315B	W4215
W3615B	W4815B (4 door)

Over-the-Refrigerator Cabinets

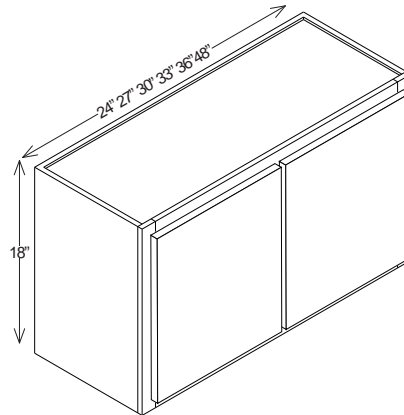


12" & 15" High - Refrigerator	
W301524B	W361524B
W331524B	W391524
W241224B	W361224B
W271224B	W391224
W301224B	W421224
W331224B	W481224B (4 door)

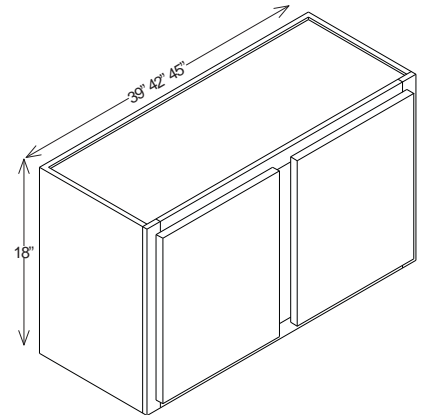
18" High Wall Cabinets



18" High Single	
W1518	W2118
W1818	W2418



18" High Double - Butt	
W2418B	W3318B
W2718B	W3618B
W3018B	W4818B (4 door)

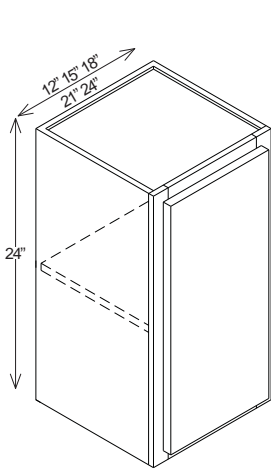


18" High Double	
W3918	
W4218	
W4518	

Wall Cabinets

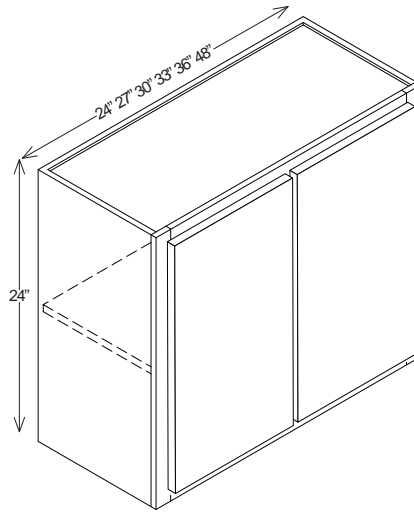
WALL

24" High Wall Cabinets



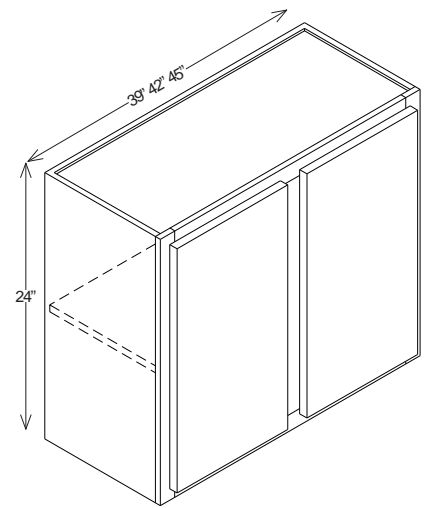
24" High Single

W1224	W2124
W1524	W2424
W1824	



24" High Double - Butt

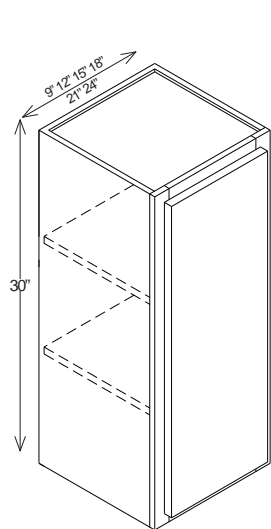
W2424B	W3324B
W2724B	W3624B
W3024B	W4824B (4 door)



24" High Double

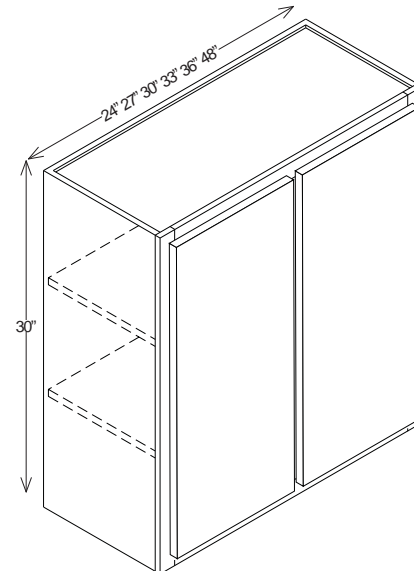
W3924
W4224
W4524

30" High Wall Cabinets



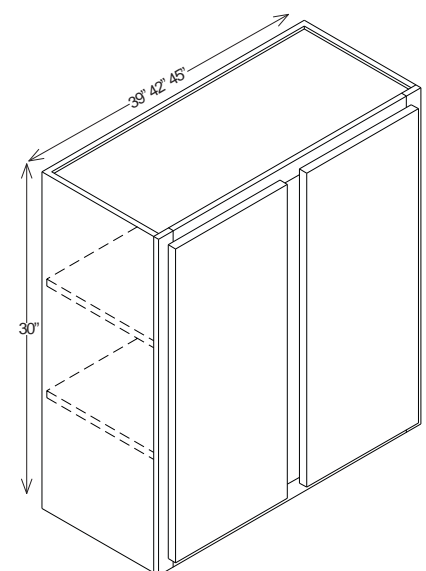
30" High Single

W930	W1830
W1230	W2130
W1530	W2430



30" High Double - Butt

W2430B	W3330B
W2730B	W3630B
W3030B	W4830B (4 door)



30" High Double

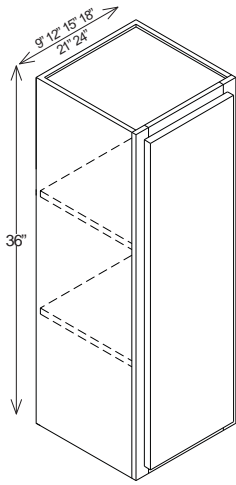
W3930
W4230
W4530

B : following Cabinet Size Designates Butt Doors
All Wall Cabinets are 12" deep, unless specified

Wall Cabinets

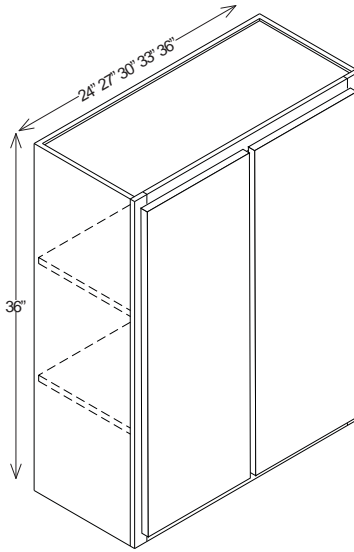
36" High Wall Cabinets

WALL



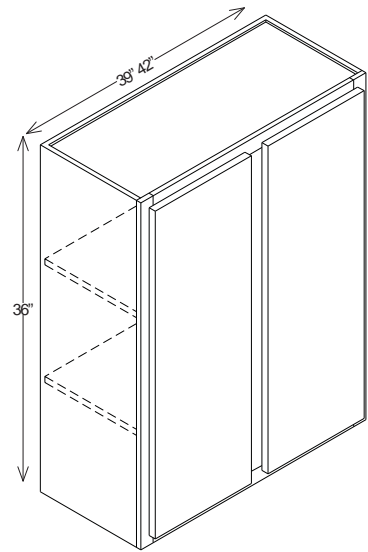
36" High Single

W936	W1836
W1236	W2136
W1536	W2436



36" High Double - Butt

W2436B	W3336B
W2736B	W3636B
W3036B	



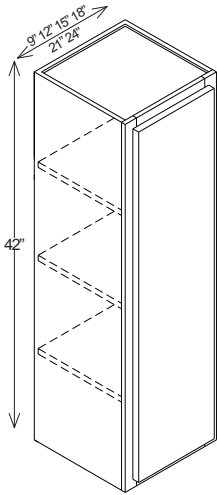
36" High Double

W3936
W4236

Wall Cabinets

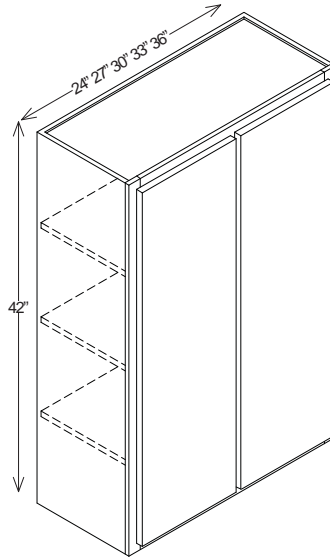
WALL

42" High Wall Cabinets



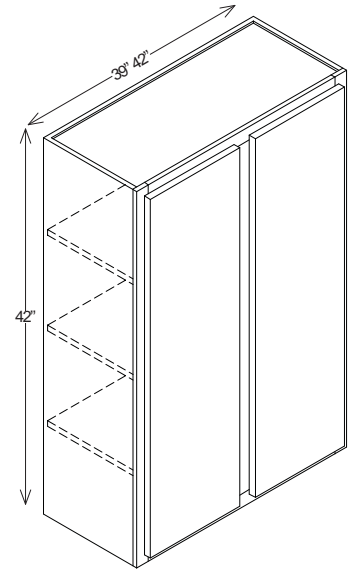
42" High Single

W942	W1842
W1242	W2142
W1542	W2442



42" High Double - Butt

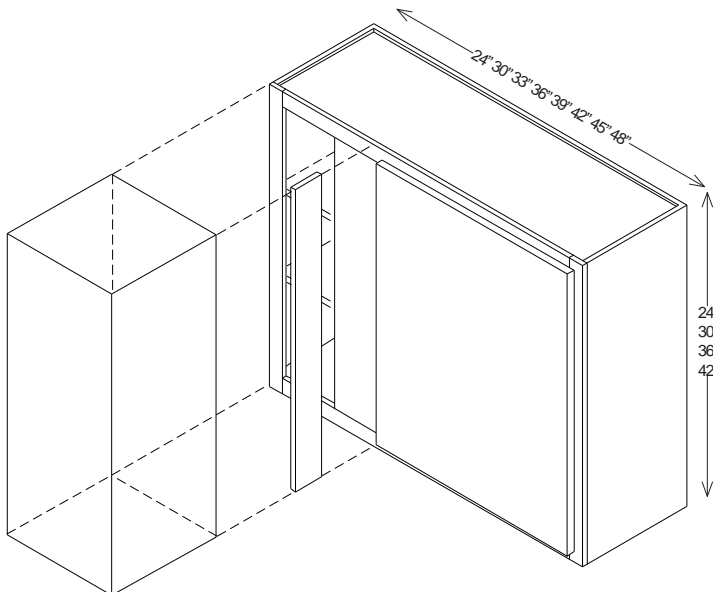
W2442B	W3342B
W2742B	W3642B
W3042B	



42" High Double

W3942
W4242

Wall Blind Cabinets



Minimum and maximum pull dimensions located on page 17.

42" High Blind

WBC2442	WBC3942B
WBC3042	WBC4242B
WBC3342	WBC4542B
WBC3642B	WBC4842B

24" High Blind

WBC2424	WBC3924B
WBC3024	WBC4224B
WBC3324	WBC4524B
WBC3624B	WBC4824B

30" High Blind

WBC2430	WBC3930B
WBC3030	WBC4230B
WBC3330	WBC4530B
WBC3630B	WBC4830B

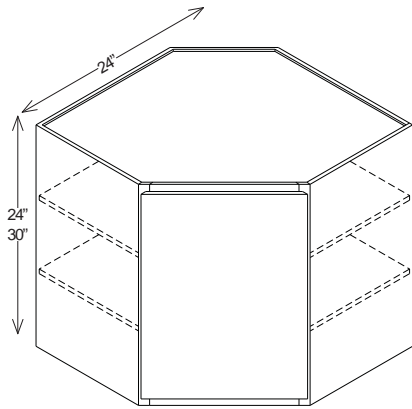
36" High Blind

WBC2436	WBC3936B
WBC3036	WBC4236B
WBC3336	WBC4536B
WBC3636B	WBC4836B

Wall Cabinets

WALL

24" & 30" High Wall Cabinets



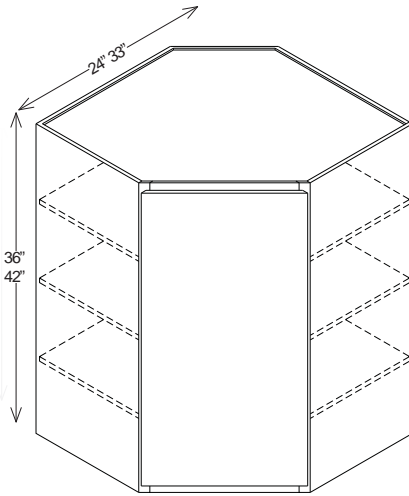
24" High Corner Wall (1 shelf)

DWA2424

30" High Corner Wall (2 shelves)

DWA2430

36" & 42" High Wall Cabinets



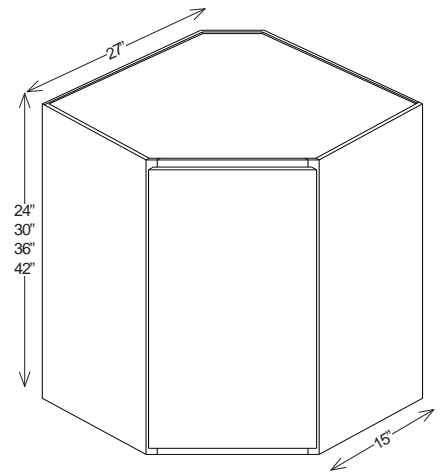
36" High Corner Wall (2 shelves)

DWA2436 DWA3336B

42" High Corner Wall (3 shelves)

DWA2442

Extra Width and Depth



Extra Width and Depth

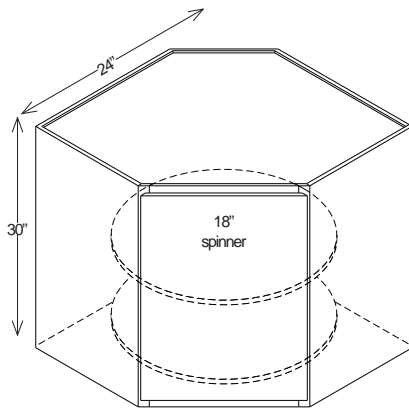
DWA272415 (No shelf)

DWA273015 (2 shelves)

DWA273615 (2 shelves)

DWA274215 (3 shelves)

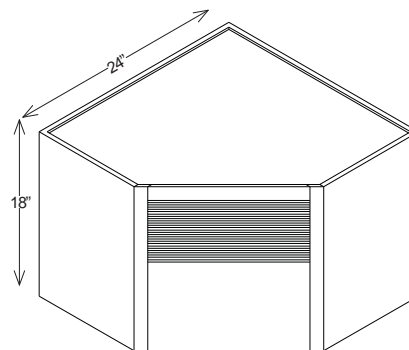
30" High Wall Lazy Susan



30" High Corner Lazy Susan

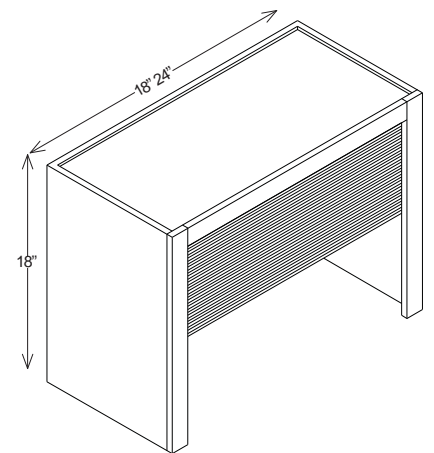
DWALS2430

Appliance Garages



18" High Corner Garage

CAG24



18" High Garage

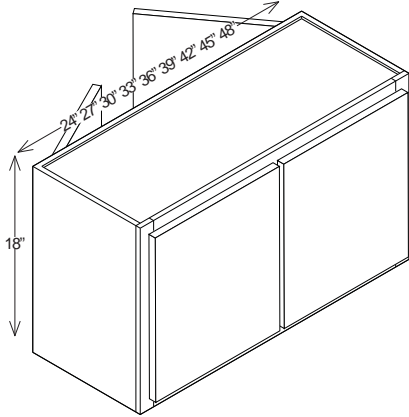
SAG1818

SAG2418

Wall Cabinets

WALL

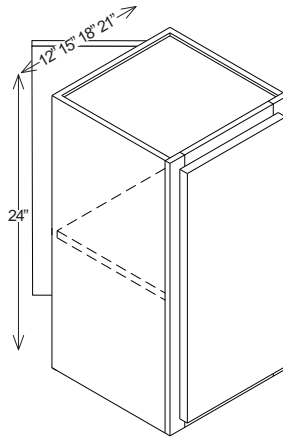
18" High Wall Peninsula Cabinets



18" High Double Peninsula

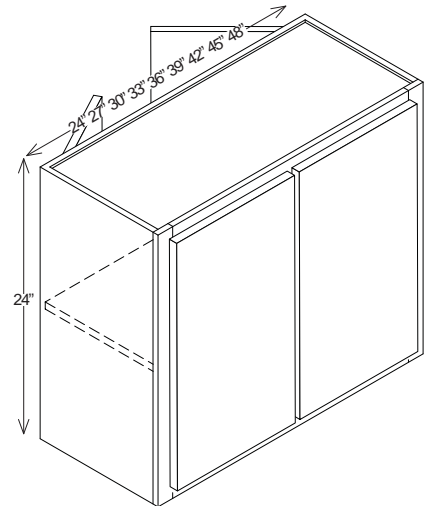
- | | |
|---------|------------------|
| W2418BP | W3918P |
| W2718BP | W4218P |
| W3018BP | W4518P |
| W3318BP | W4818BP (4 door) |
| W3618BP | |

24" High Wall Peninsula Cabinets



24" High Single Peninsula

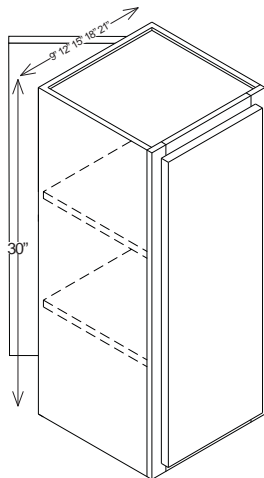
- | | |
|--------|--------|
| W1224P | W1824P |
| W1524P | W2124P |



24" High Double Peninsula

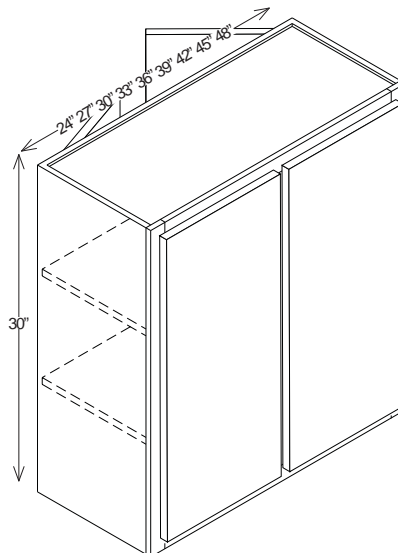
- | | |
|---------|------------------|
| W2424BP | W3924P |
| W2724BP | W4224P |
| W3024BP | W4524P |
| W3324BP | W4824BP (4 door) |
| W3624BP | |

30" High Wall Peninsula Cabinets



30" High Single Peninsula

- | | |
|--------|--------|
| W930P | W2130P |
| W1230P | |
| W1530P | |
| W1830P | |



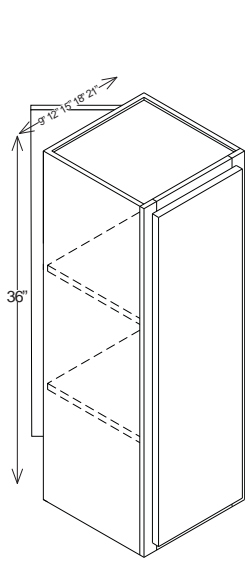
30" High Double Peninsula

- | | |
|---------|------------------|
| W2430BP | W3930P |
| W2730BP | W4230P |
| W3030BP | W4530P |
| W3330BP | W4830BP (4 door) |
| W3630BP | |

B : following Cabinet Size Designates Butt Doors
All Wall Cabinets are 12" deep, unless specified

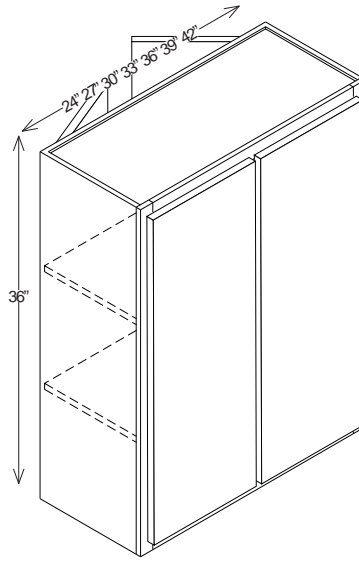
Wall Cabinets

36" High Wall Peninsula Cabinets



36" High Single Peninsula

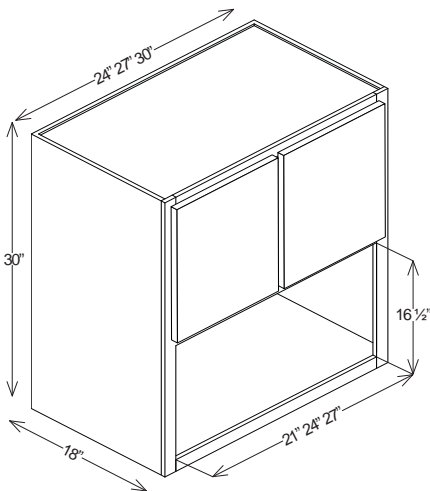
W936P W1836P
 W1236P W2136P
 W1536P



36" High Double Peninsula

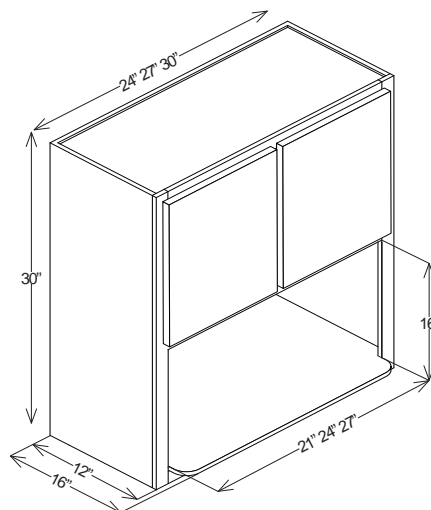
W2436BP W3636BP
 W2736BP W3936P
 W3036BP W4236P
 W3336BP

30" High Microwave Wall Cabinets



30" High

MWW2430B (18" deep)
 MWW2730B (18" deep)
 MWW3030B (18" deep)

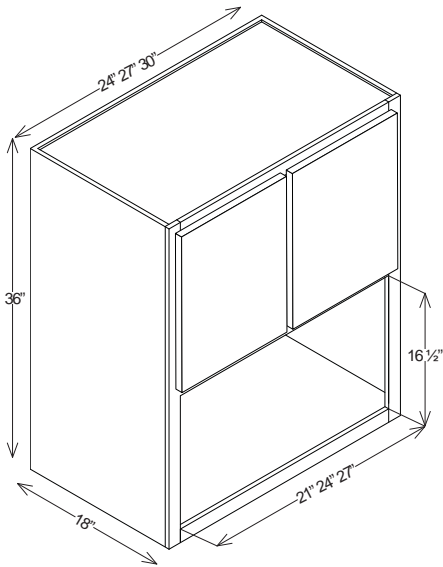


30" High

MWW243012BEXS (12" deep)
 MWW273012BEXS (12" deep)
 MWW303012BEXS (12" deep)

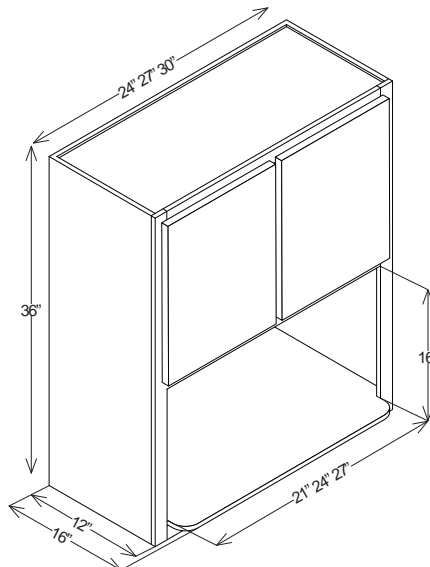
Interior is light maple in finish.
 Matching interior option available upon request

36" High Microwave Wall Cabinets



36" High

- MWW2436B (18" deep)
- MWW2736B (18" deep)
- MWW3036B (18" deep)

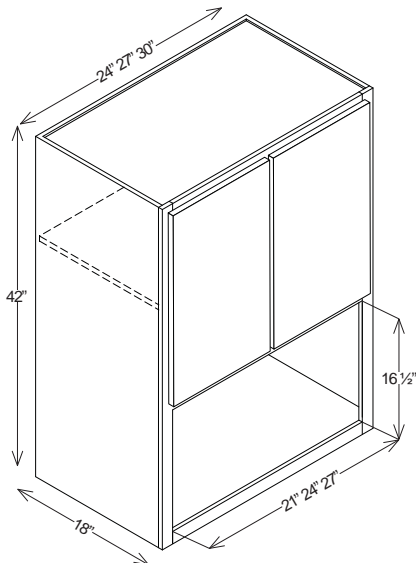


36" High

- MWW243612BEXS (12" deep)
- MWW273612BEXS (12" deep)
- MWW303612BEXS (12" deep)

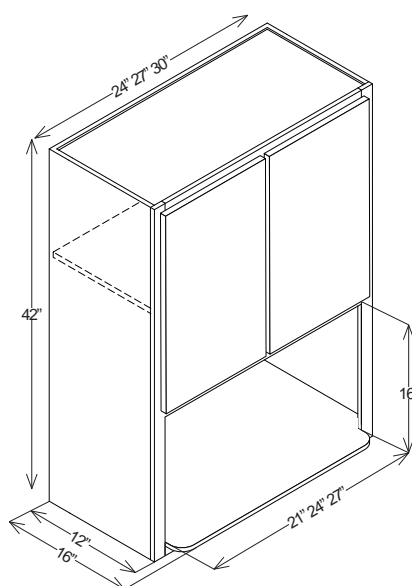
Interior is light maple in finish.
Matching interior option available upon request

42" High Microwave Wall Cabinets



42" High

- MWW2442B (18" deep)
- MWW2742B (18" deep)
- MWW3042B (18" deep)



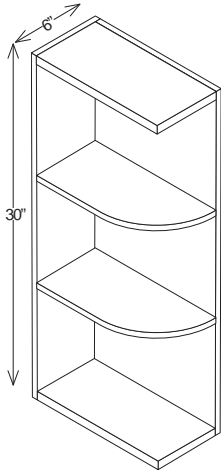
42" High

- MWW244212BEXS (12" deep)
- MWW274212BEXS (12" deep)
- MWW304212BEXS (12" deep)

Interior is light maple in finish.
Matching interior option available upon request

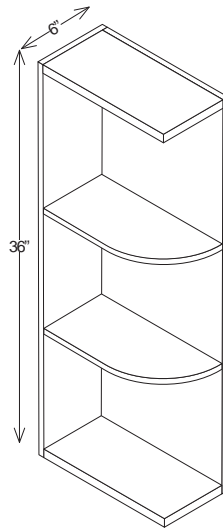
Wall Cabinets

30" High Wall End Open Shelf



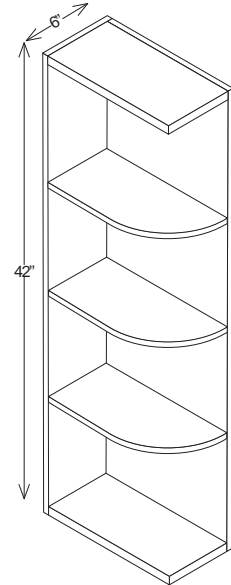
30" High
WEOS630

36" High Wall End Open Shelf



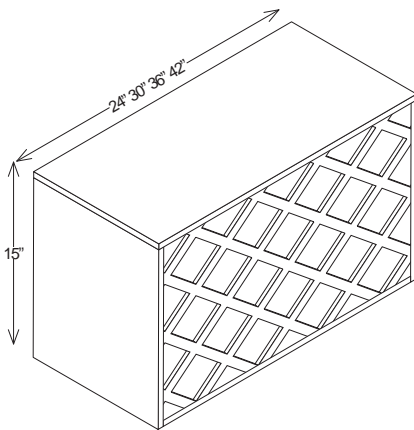
36" High
WEOS636

42" High Wall End Open Shelf



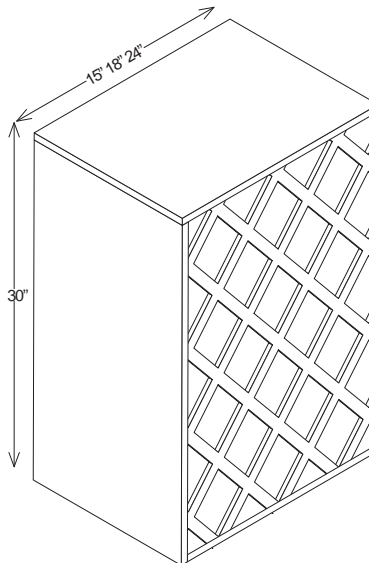
42" High
WEOS642

15" High Wine Rack



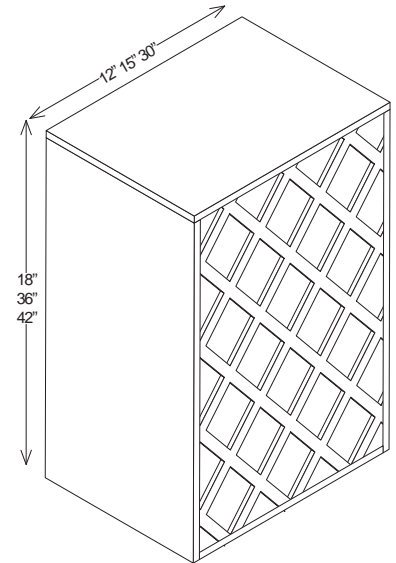
15" High
WR2415 WR3615
WR3015 WR4215

30" High Wine Rack



30" High
WR1530 WR2430
WR1830

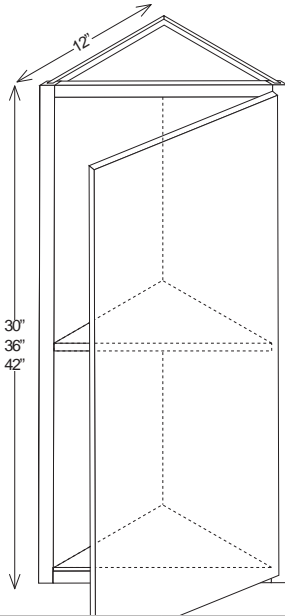
Matching interior included on all wine racks.



18" 36" 42" High
WR3018 WR1542

WR1236
WR1536

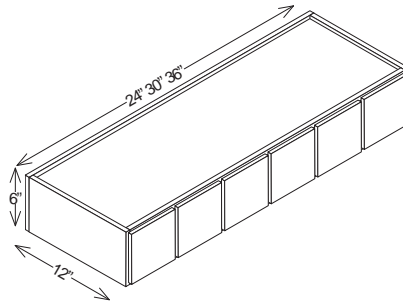
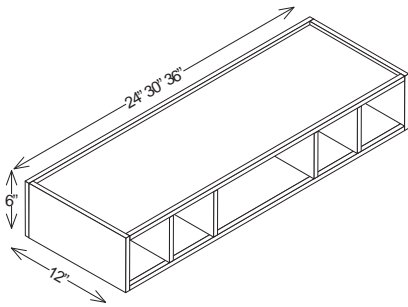
Diagonal Wall End Cabinet



Diagonal End Cabinet
 WEC1230
 WEC1236
 WEC1242

Wall Organizers

Wall Spice Drawers



Wall Organizer
 ORG246 (matching interior)
 ORG306 (matching interior)
 ORG366 (matching interior)

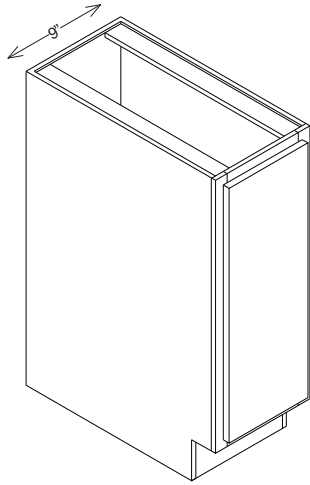
Spice Drawer
 SD24
 SD30
 SD36

B : following Cabinet Size Designates Butt Doors
 All Wall Cabinets are 12" deep, unless specified

Base Cabinets

BASE

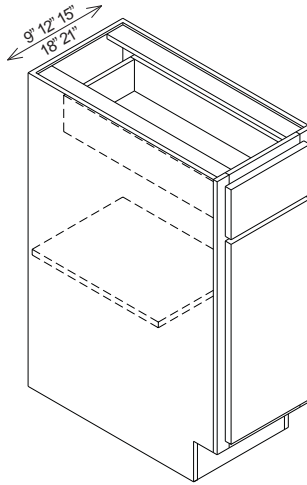
Full Height Door Tray Base



Full Height Door Tray Base

TB9

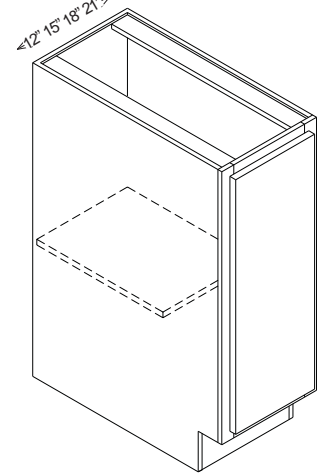
Single Door / Drawer Cabinets



Single Door / Drawer

B9 B18
 B12 B21
 B15

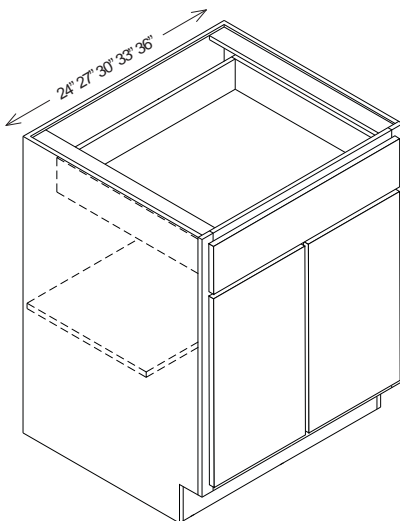
Single Full Height Door Cabinets



Single Door

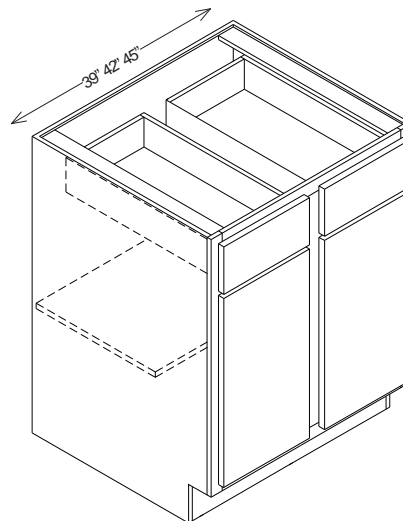
B12FH B18FH
 B15FH B21FH

Double Door / Drawer Cabinets



Double Door - Butt

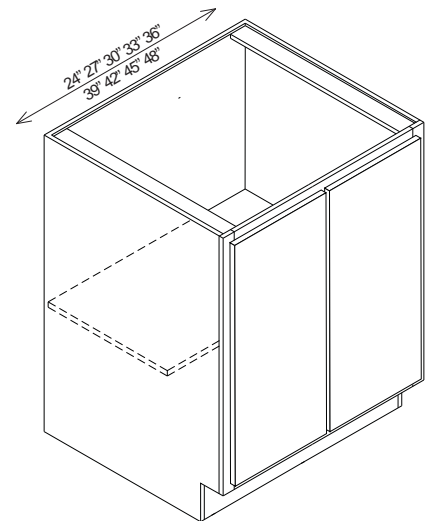
B24B B33B
 B27B B36B
 B30B B48B (4 door)



Double Door

B39 B45
 B42

Double Full Height Door Cabinets



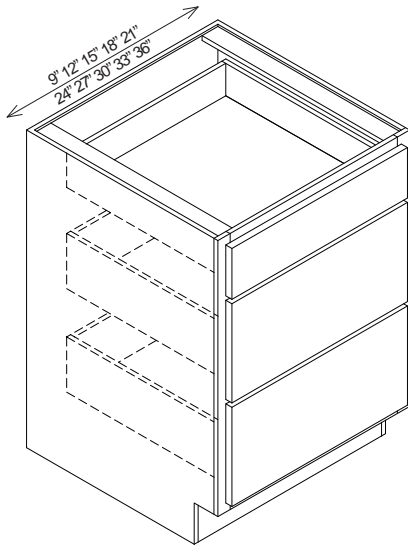
Double Door - Full Height

B24BFH B39FH
 B27BFH B42FH
 B30BFH B45FH
 B33BFH B48BFH (4 door)
 B36BFH

Base Cabinets



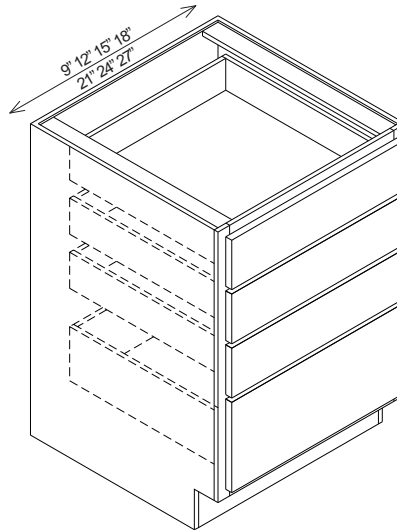
3 Drawer Base Cabinets



3 Drawer Base

B3D9	B3D24
B3D12	B3D27
B3D15	B3D30
B3D18	B3D34
B3D21	B3D36

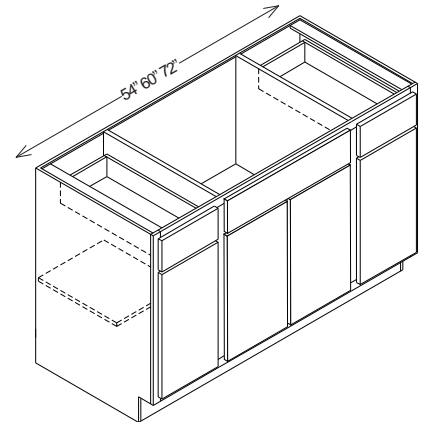
4 Drawer Base Cabinets



4 Drawer Base

B4D9	B4D21
B4D12	B4D24
B4D15	B4D27
B4D18	

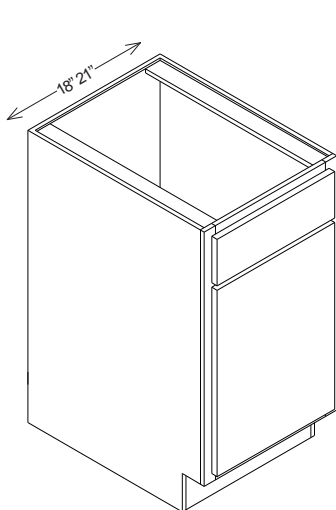
Combination Sink Cabinets



Combination Sink Base

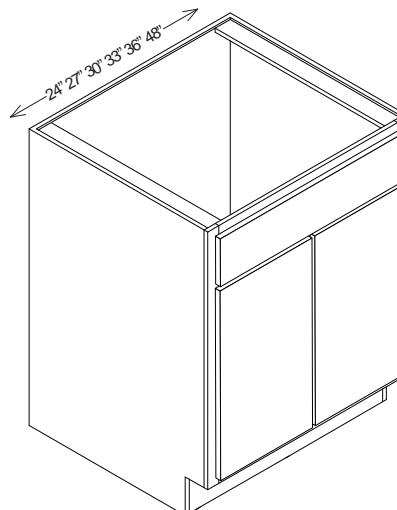
CSB54B
CSB60B
CSB72B

Sink Base Cabinets



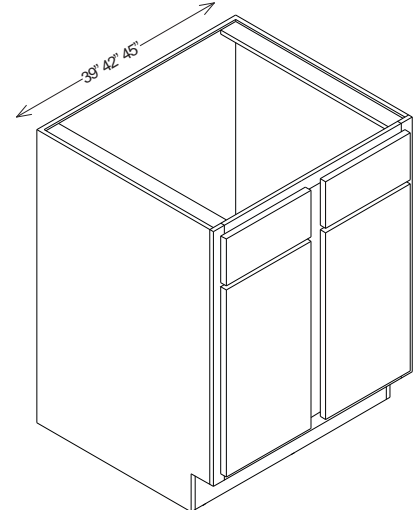
Single Door

SB18
SB21



Double Door - Butt

SB24B	SB33B
SB27B	SB36B
SB30B	SB48B (4 door)



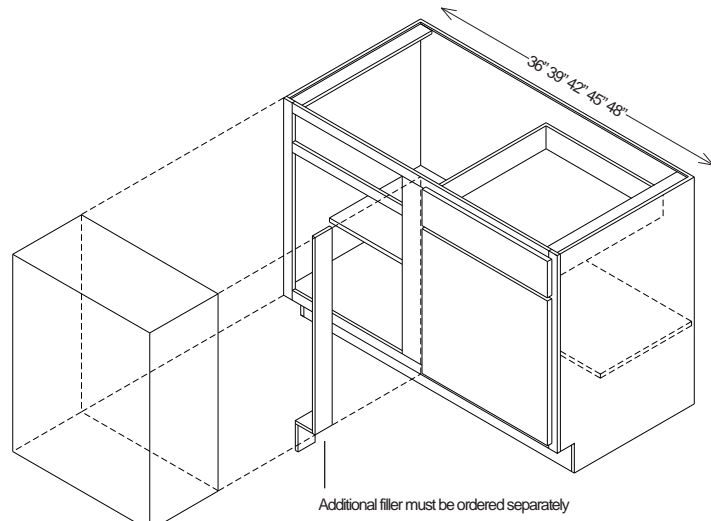
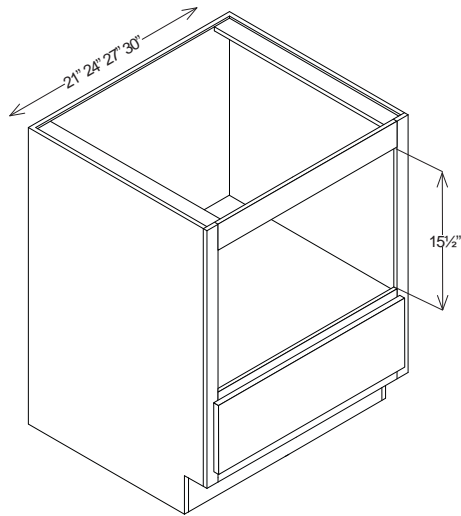
Double Door

SB39	SB45
SB42	

Base Cabinets

Base Microwave Cabinets

Blind Base Cabinets



Microwave Base

BMW21 BMW27
BMW24 BMW30

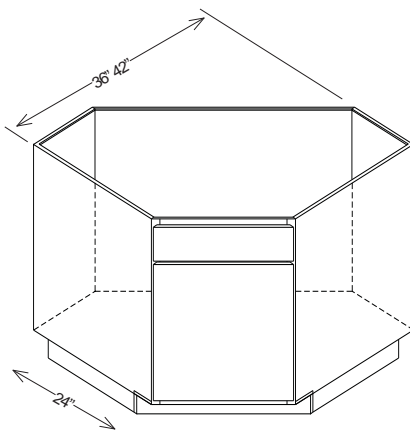
Blind Base

BBC36 BBC45
BBC39 BBC48
BBC42

Minimum and maximum pull dimensions located on page 17.

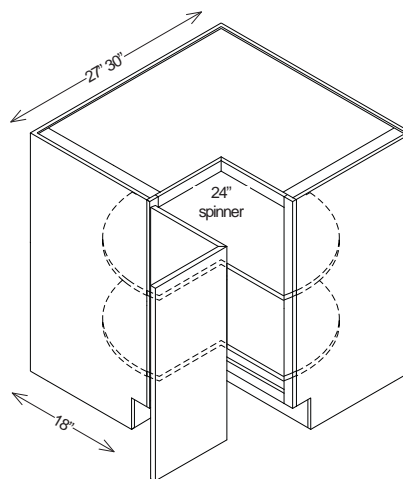
Diagonal Base Cabinets

Lazy Susan Cabinets



Diagonal Base

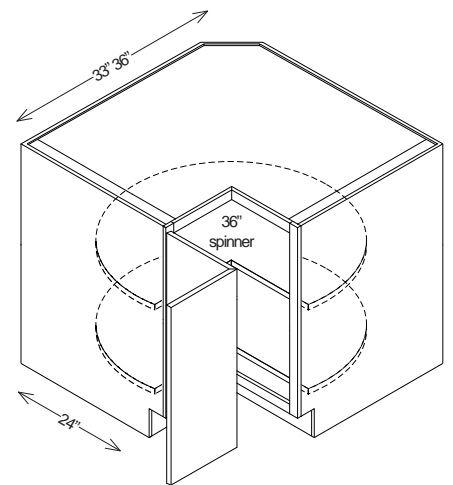
DC36
DC42



Lazy Susan

LS33
LS36

*Handicap height available only with standard 4 1/2" toe kick.

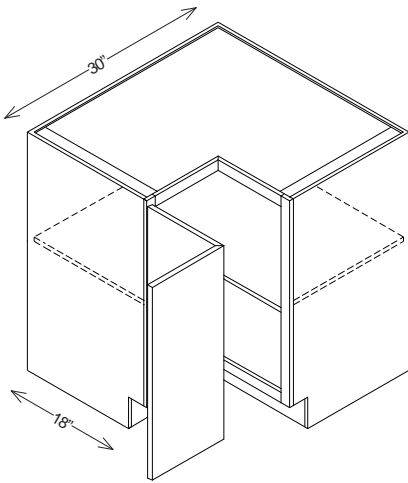


Super Lazy Susan

SLS33
SLS36

*Handicap height available only with standard 4 1/2" toe kick.

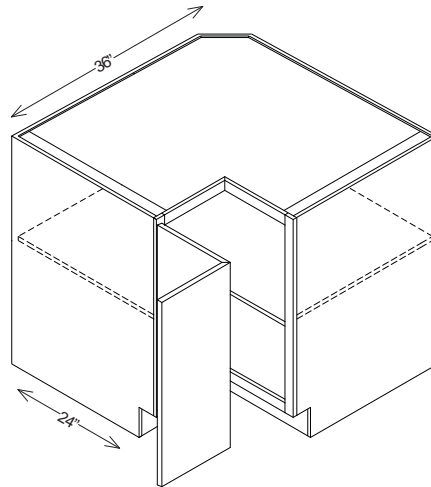
Square Corner Base Cabinets



Square Corner Base

SCB33

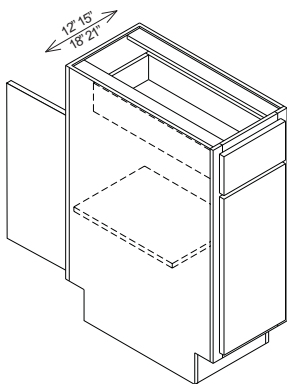
SCB36



Super Square Corner Base

SSCB36

Peninsula Base Cabinets



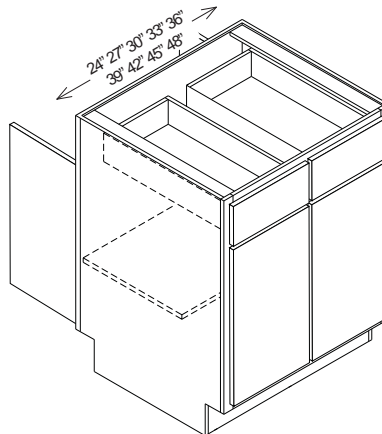
Single Door - Peninsula

B12P

B18P

B15P

B21P



Double Door - Peninsula

B24BP

B39P (2 Drawer)

B27BP

B42P (2 Drawer)

B30BP

B45P (2 Drawer)

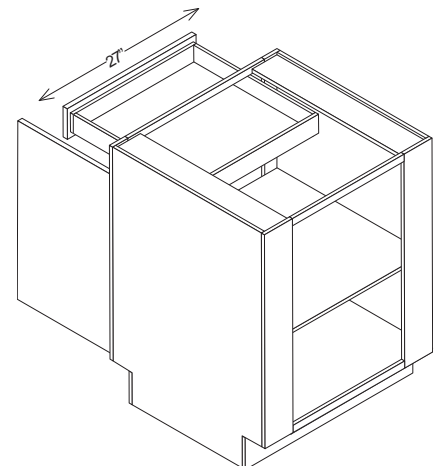
B33BP

B48BP (2 Drawer)

B36BP

(8 doors)

*B48BP shown



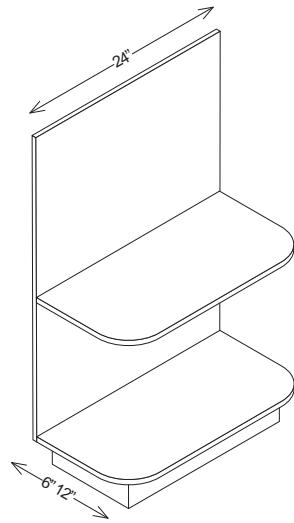
Base Corner - Peninsula

PBCC27

Base Cabinets

BASE

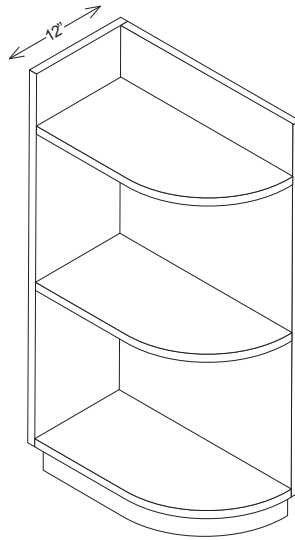
Peninsula End Shelf



Peninsula Open End Shelf

PBES6
PBES12

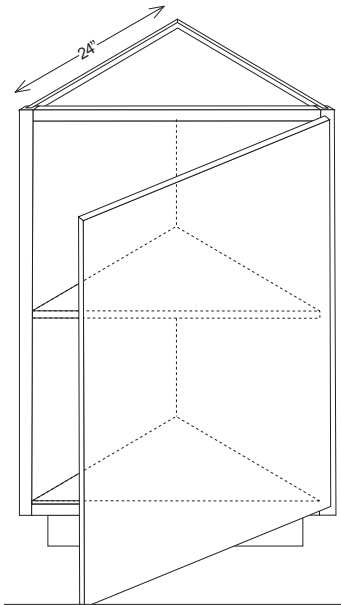
Base End Open Shelf



Base End Open Shelf

BEOS1224
(Order Left or Right)

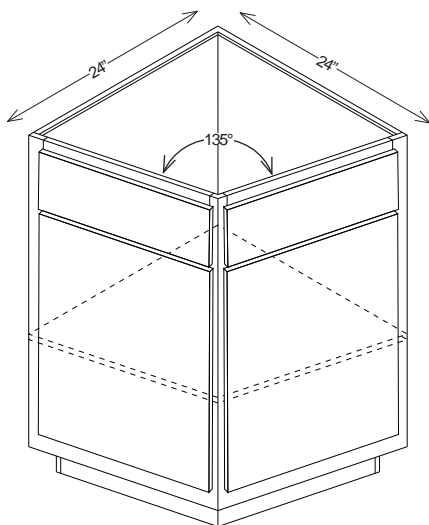
Base End Corner



Base End Corner

BEC24

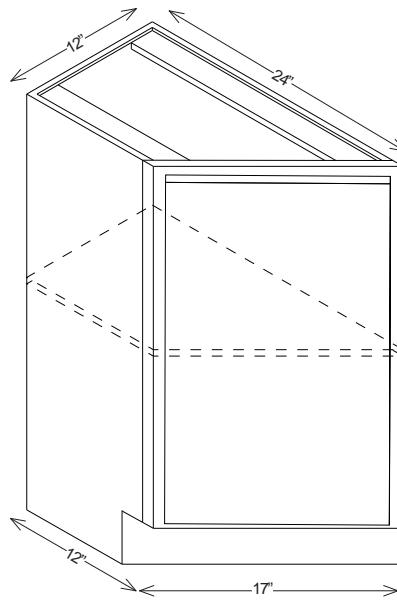
Angled End Base Cabinet



Angled End Base

AEB24

Transitional End Base Cabinet

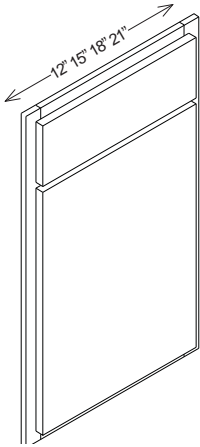


Transitional End Base

AB12L (shown above)
AB12R

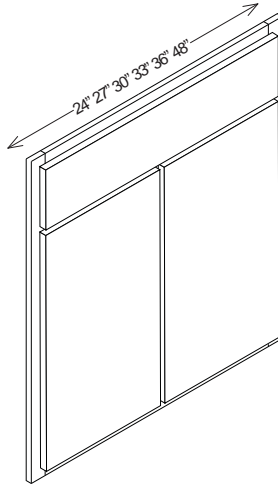
Base Cabinets

Sink Fronts



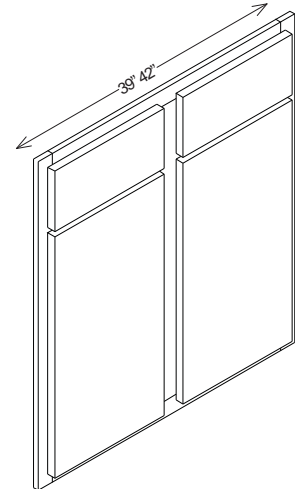
Single Door Front

SF12 SF18
SF15 SF21



Double Door Front - Butt

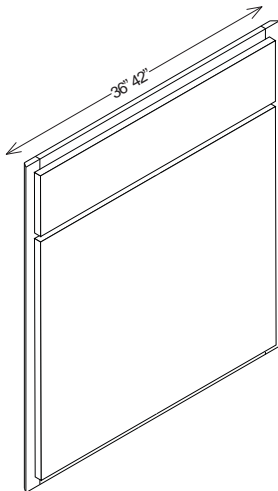
SF24B SF33B
SF27B SF36B
SF30B SF48B (4 Door)



Double Door Front

SF39 SF42

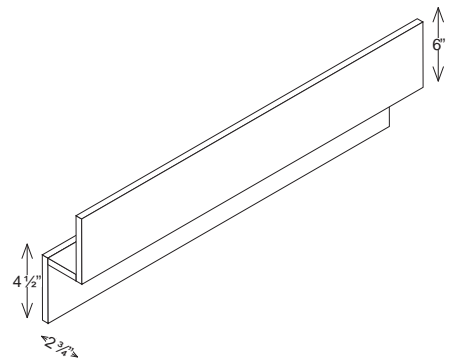
Diagonal Sink Front



Diagonal Front

DSF36
DSF42

Drop in Range Front

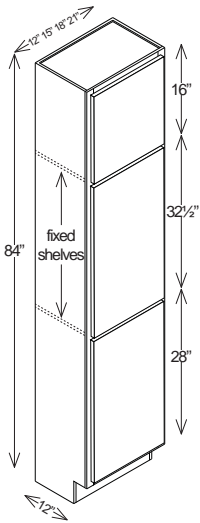


Drop-in Range Front

DIRF30

Tall Cabinets

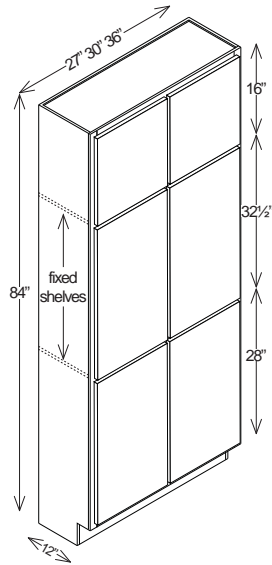
84" High Tall Cabinets



Tall Single Door

T128412 T188412
T158412 T218412

*shelf kits not included

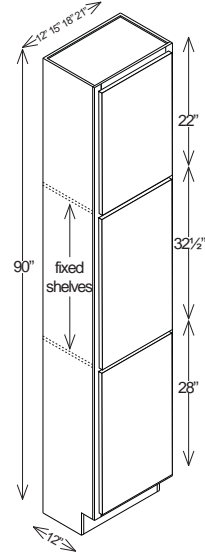


Tall Double Door

T248412B T368412B
T308412B

*shelf kits not included

90" High Tall Cabinets

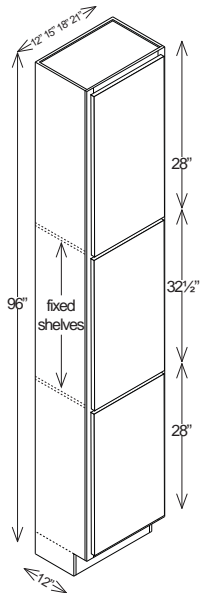


Tall Single Door

T129012 T189012
T159012 T219012

*shelf kits not included

96" High Tall Cabinets

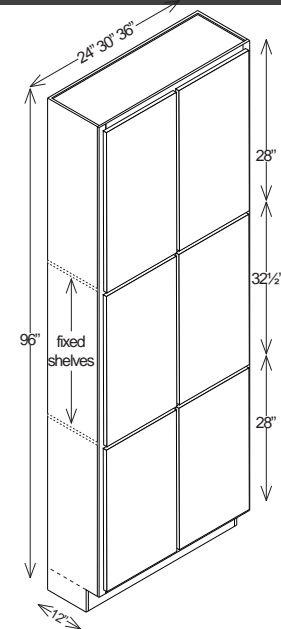


Tall Single Door

T129612 T189612
T159612 T219612

Cabinet installs on included detached toe kick box (allows for easier install)

*shelf kits not included

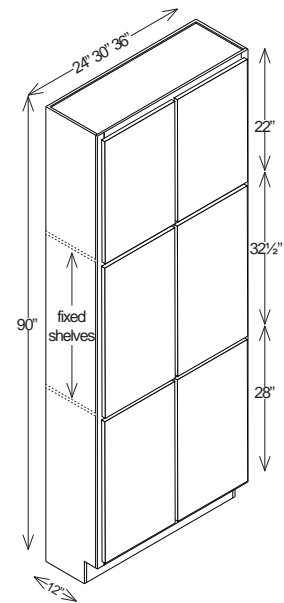


Tall Double Door

T249612B T369612B
T309612B

Cabinet installs on included detached toe kick box (allows for easier install)

*shelf kits not included



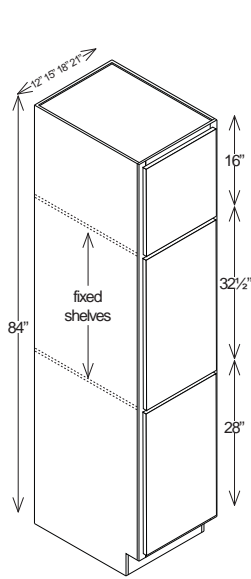
Tall Double Door

T249012B T369012B
T309012B

*shelf kits not included

Tall Cabinets

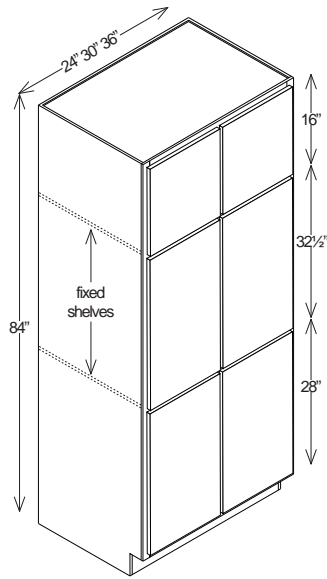
84" High Tall Cabinets



Tall Single Door

T128424 T188424
T158424 T218424

*shelf kits not included

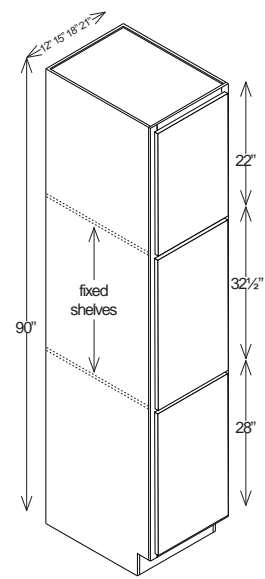


Tall Double Door

T248424B T368424B
T308424B

*shelf kits not included

90" High Tall Cabinets

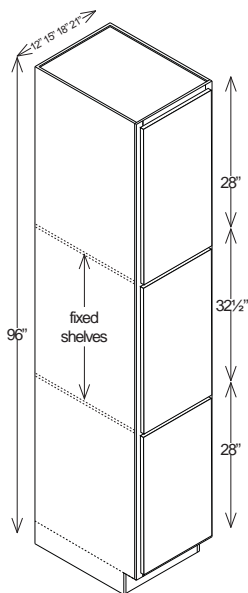


Tall Single Door

T129024 T189024
T159024 T219024

*shelf kits not included

96" High Tall Cabinets

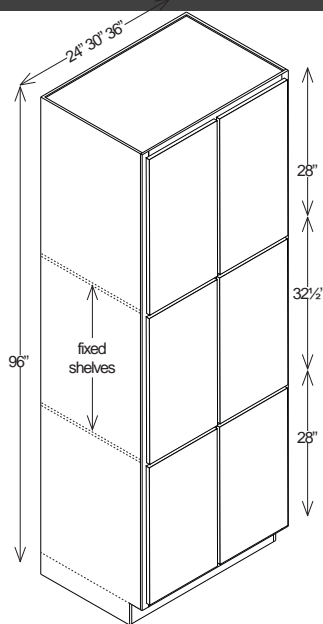


Tall Single Door

T129624 T189624
T159624 T219624

Cabinet installs on included detached toe kick box (allows for easier install)

*shelf kits not included

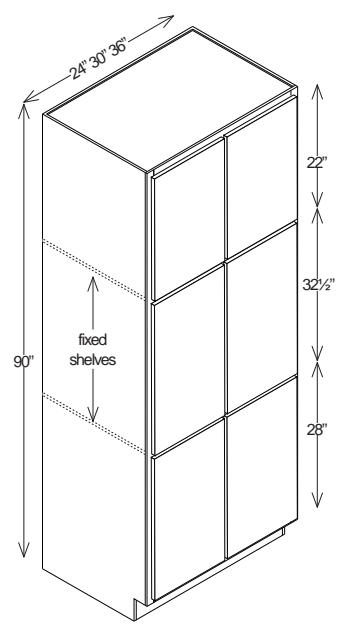


Tall Double Door

T249624B T369624B
T309624B

Cabinet installs on included detached toe kick box (allows for easier install)

*shelf kits not included



Tall Double Door

T249024B T369024B
T309024B

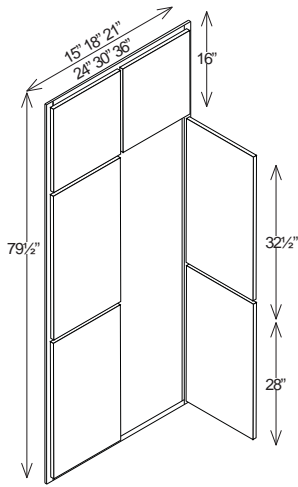
*shelf kits not included

TALL

B : following Cabinet Size Designates Butt Doors
All Tall Cabinets are 24" deep, unless specified

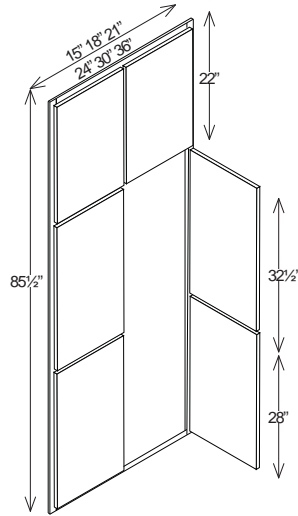
Tall Cabinets

84" High Tall Fronts



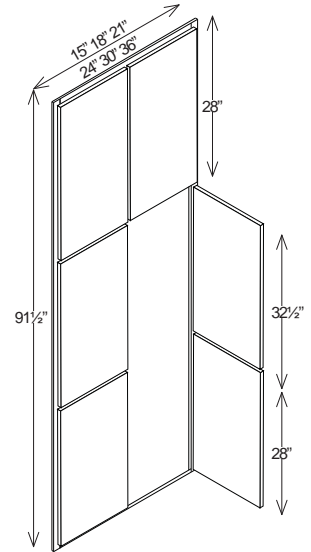
Utility Front	
UF1584	UF2484B
UF1884	UF3084
UF2184	UF3684

90" High Tall Fronts



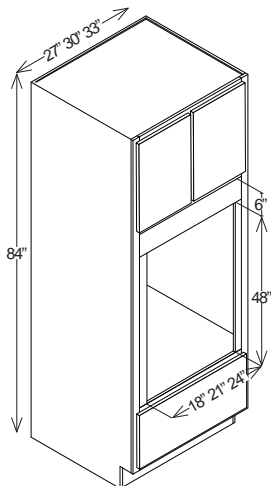
Utility Front	
UF1590	UF2490B
UF1890	UF3090
UF2190	UF3690

96" High Tall Fronts



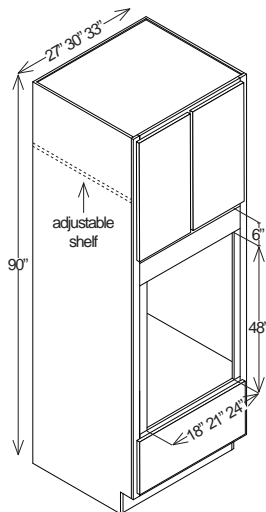
Utility Front	
UF1596	UF2496B
UF1896	UF3096
UF2196	UF3696

84" High Oven Cabinets



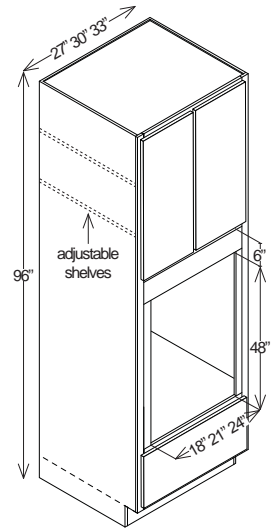
Universal Cabinet	
OV2784B	OV3384B
OV3084B	

90" High Oven Cabinets



Universal Cabinet	
OV2790B	OV3390B
OV3090B	

96" High Oven Cabinets

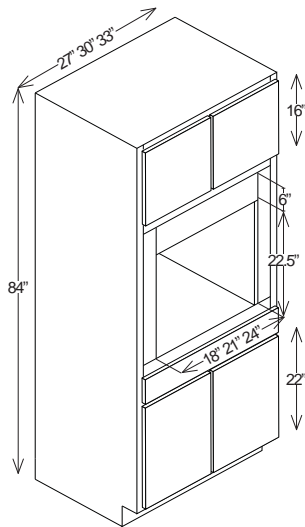


Universal Cabinet	
OV2796B	OV3396B
OV3096B	

Cabinet installs on included detached toe kick box (allows for easier install)

Tall Cabinets

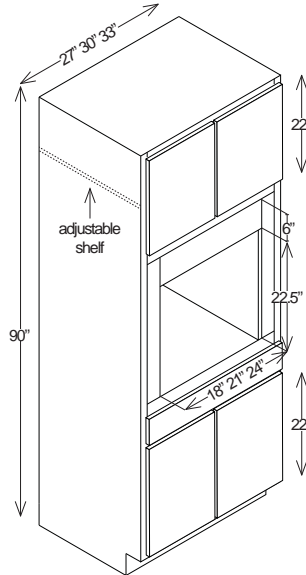
84" High Single Oven



Single Oven

SOV2784B
SOV3084B
SOV3384B

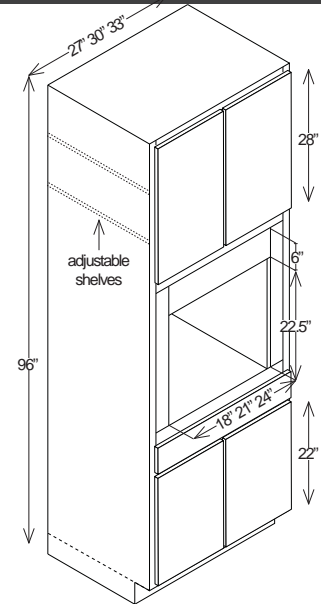
90" High Single Oven



Single Oven

SOV2790B
SOV3090B
SOV3390B

96" High Single Oven

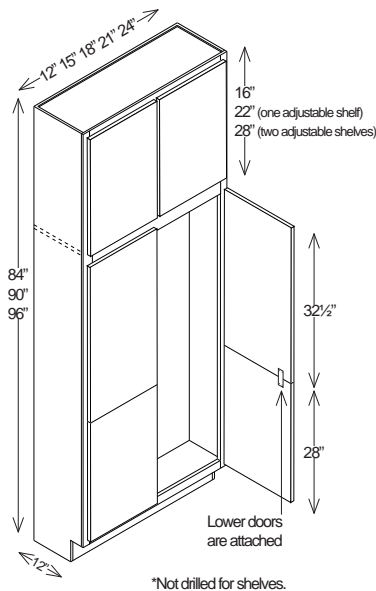


Single Oven

SOV2796B
SOV3096B
SOV3396B

Cabinet installs on included detached toe kick box (allows for easier install)

Tall Broom Closet



Drawing shown in 12" deep. 24" Broom Closets also available.

96" tall cabinets install on included detached toe kick box (allows for easier install)

84" High Broom Closets

TBC158412	TBC158424
TBC188412	TBC188424
TBC248412	TBC248424
TBC308412	TBC308424

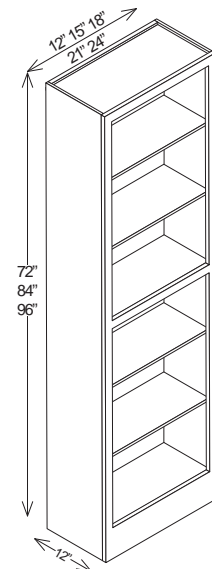
90" High Broom Closets

TBC159012	TBC159024
TBC189012	TBC189024
TBC249012	TBC249024
TBC309012	TBC309024

96" High Broom Closets

TBC159612	TBC159624
TBC189612	TBC189624
TBC249612	TBC249624
TBC309612	TBC309624

Book Cases



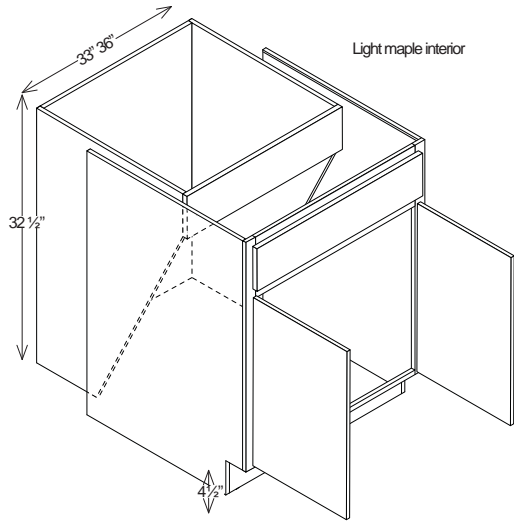
Book Cases

BC127212	BC128412	BC129612
BC157212	BC158412	BC159612
BC187212	BC188412	BC189612
BC217212	BC218412	BC219612
BC247212	BC248412	BC249612

B : following Cabinet Size Designates Butt Doors
All Tall Cabinets are 24" deep, unless specified

Handicap Cabinets

Handicap Sink Base Cabinet



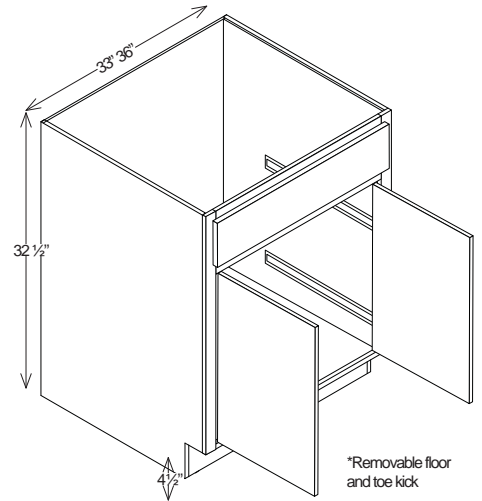
Light maple interior

Handicap Sink Base
(Removable Front)

SB33HCRF

SB36HCRF

Handicap Sink Base Pocket Door



*Removable floor
and toe kick

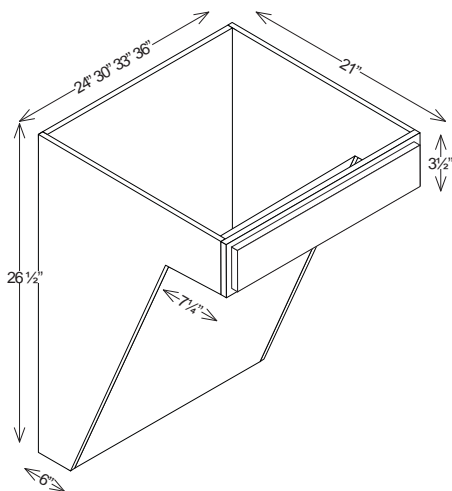
Handicap Sink Base
(Pocket Door)

SB33BHC_POC

SB36BHC_POC

Wall Hung Lav

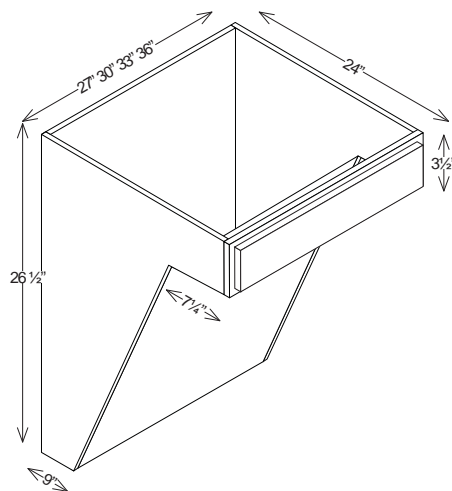
Wall Hung Base



Wall Hung Lav

WHL24 WHL33

WHL30 WHL36



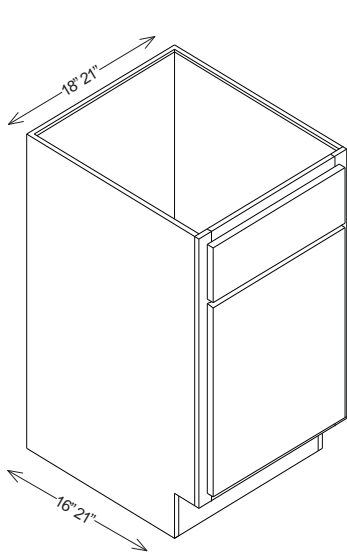
Wall Hung Base

WHB27 WHB33

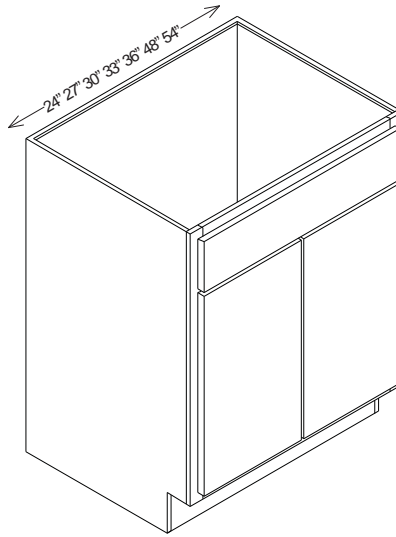
WHB30 WHB36

Vanity Cabinets

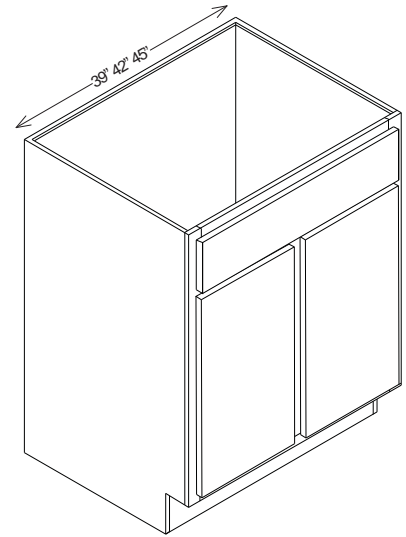
Vanity Sink Base Cabinets



Single Door	
VSB18	
VSB21	
VSB1816	(16" deep)
VSB2416	(16" deep)

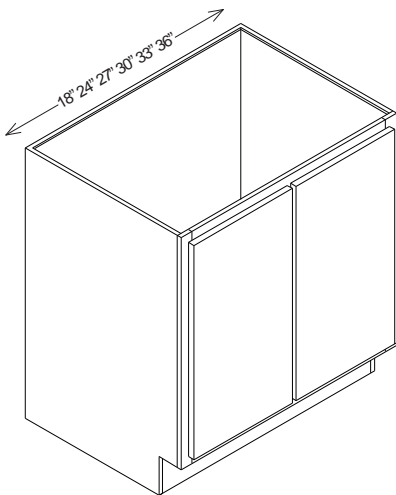


Double Door - Butt	
VSB24B	VSB36B
VSB27B	VSB42
VSB30B	VSB48B (4 doors)
VSB33B	VSB54B (4 doors)

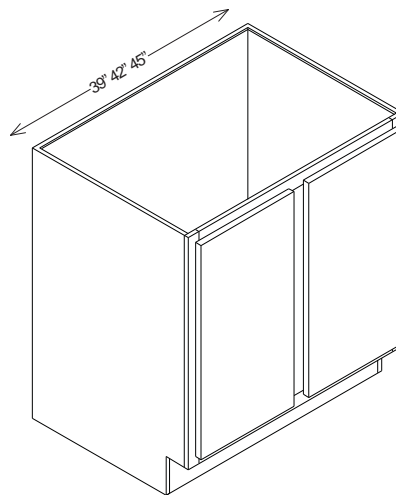


Double Door	
VSB39	VSB45
VSB42	

Vanity Sink Base Full Height Door Cabinets



Double Door - Butt	
VSBF18	VSBF30B
VSBF24B	VSBF33B
VSBF27B	VSBF36B



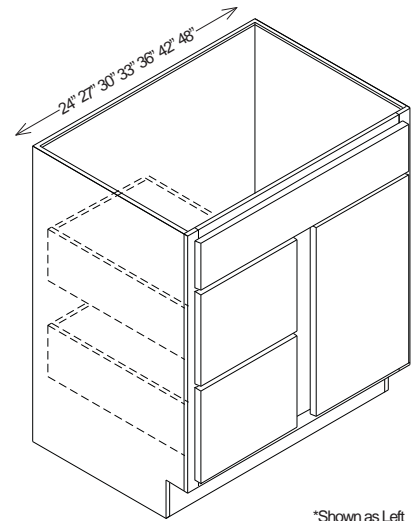
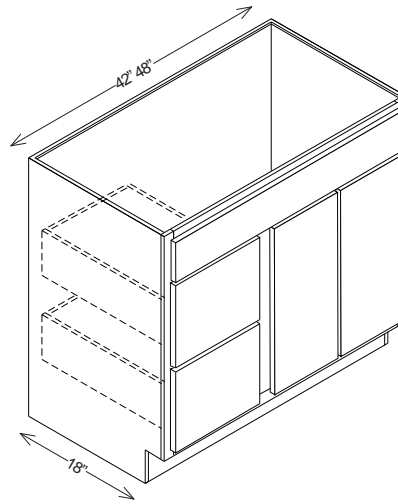
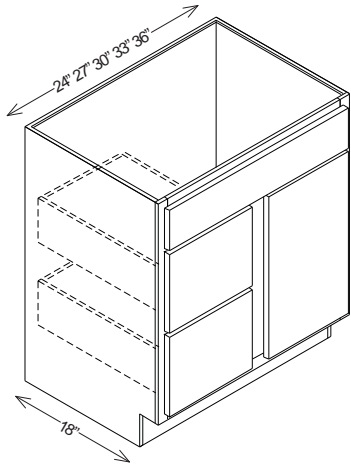
Double Door	
VSBF39	VSBF54B (4 doors)
VSBF42	VSBF60B (4 doors)
VSBF45	VSBF66B (4 doors)
VSBF48B (4 doors)	VSBF72B (4 doors)

VANITY

Vanity Cabinets

Vanity Sink 2-Drawer Cabinets 18" Deep

Vanity Sink 2-Drawer Cabinets



*Shown as Left

Vanity Sink Drawer Base
(specify left or right)

VS2D2418 VS2D3318
VS2D2718 VS2D3618
VS2D3018

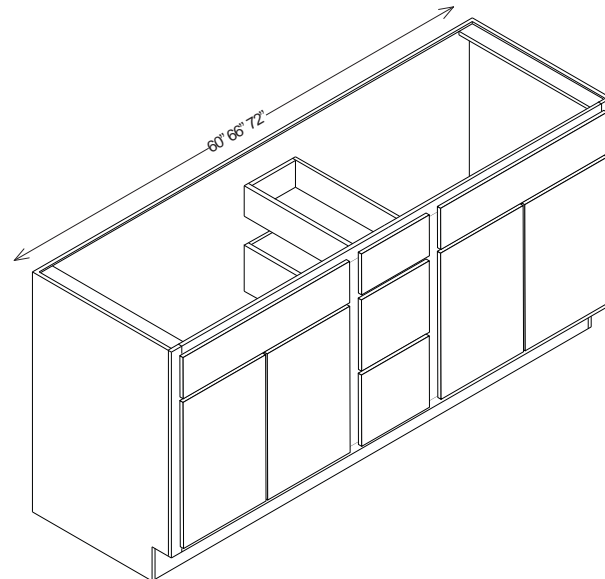
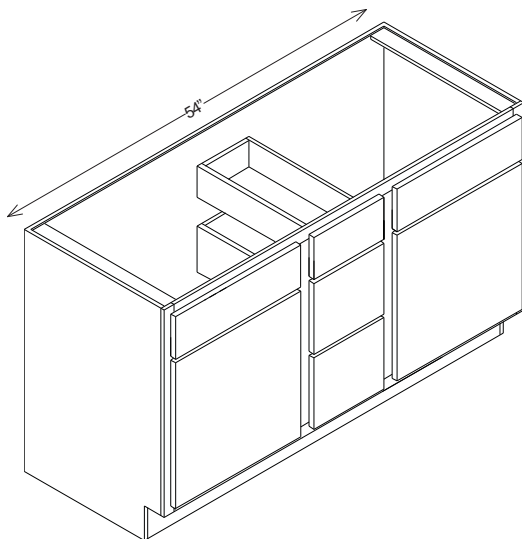
Vanity Sink Drawer Base
(specify left or right)

VS2D4218B
VS2D4818B

Vanity Sink Drawer Base
(specify left or right)

VS2D24 VS2D36
VS2D27 VS2D42B (2 Door)
VS2D30 VS2D48B (2 Door)
VS2D33

Vanity Center Drawer Base Cabinets



2 Door 3 Drawer Combination Van-
ity with 1 Drawer Stack

VCD54

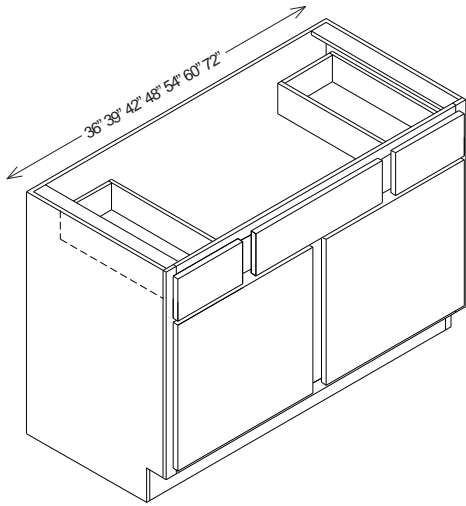
4 Door 3 Drawer Combination Vanity
with 1 Drawer Stack

VCD60B VCD72B
VCD66B

VANITY

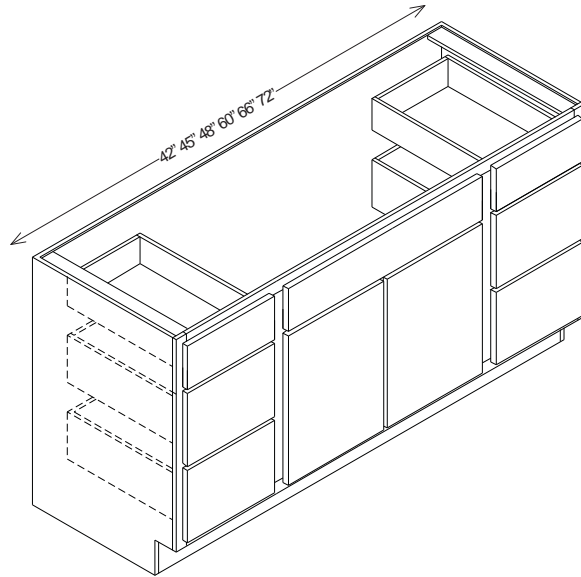
Vanity Cabinets

Vanity Sink Combo Cabinets



Combination Vanity Sink Base

- | | |
|-----------------|-----------------|
| VSC36B | VSC54B (4 door) |
| VSC39 | VSC60B (4 door) |
| VSC42 | VSC72B (4 door) |
| VSC48B (4 door) | |

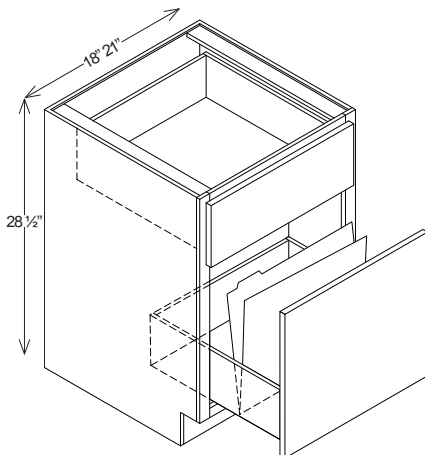


2 Door with 6 Drawer Combination Vanity

- | | |
|---------|---------|
| VS6D42 | VS6D60B |
| VS6D45 | VS6D66B |
| VS6D48B | VS6D72B |

Vanity File Cabinets

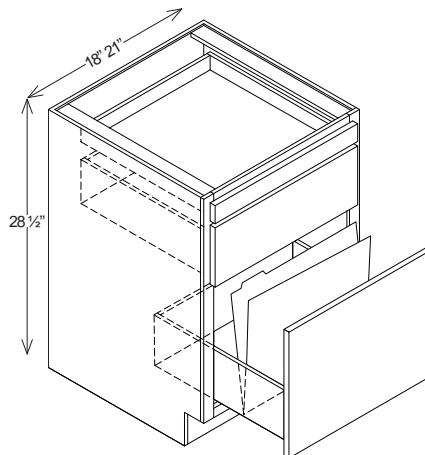
Single Door / Drawer Vanity Base Cabinets



With side mount full extension guides.
*File hang rods not supplied

2 Drawer

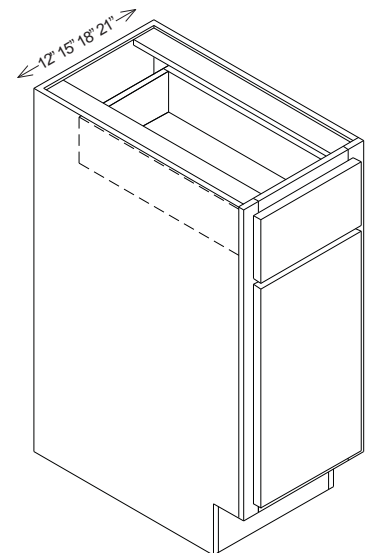
- V2D18DH
- V2D21DH



With side mount full extension guides.
*File hang rods not supplied

3 Drawer

- V3D18DH
- V3D21DH

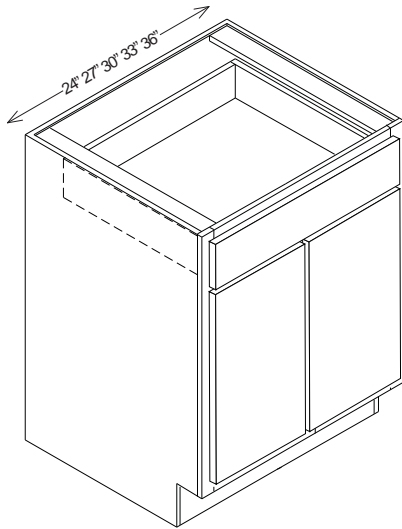


1 Door 1 Drawer

- VB12 VB21
- VB15
- VB18

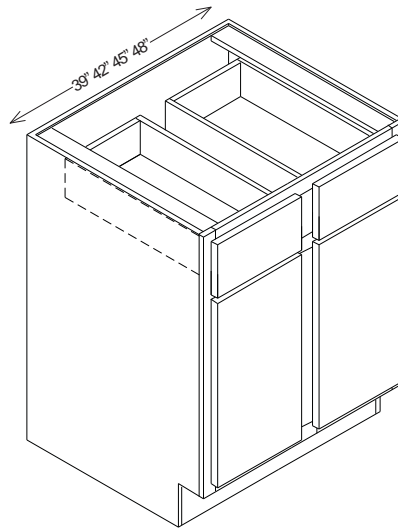
All Vanity Cabinets available as full height.

Double Door / Drawer Vanity Base Cabinets



Double Door - Butt

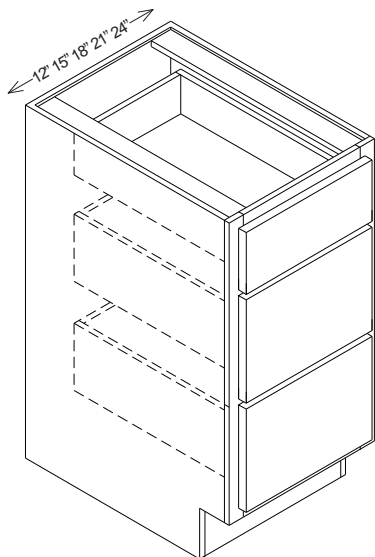
VB24B	VB33B
VB27B	VB36B
VB30B	



2 Doors 2 Drawers

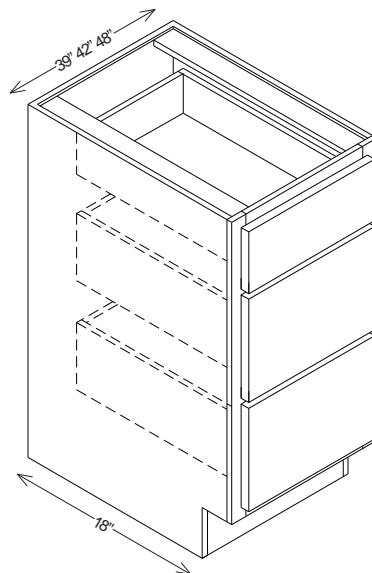
VB39	VB45
VB42	VB48B (4 door)

3 Drawer Vanity Base Cabinets



Vanity Drawer Base

V3D12	V3D21
V3D15	V3D24
V3D18	

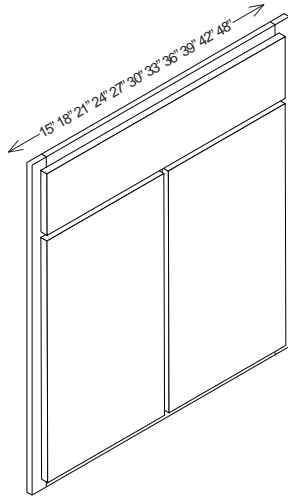


Vanity Drawer Base - 18" Deep

V3D1218	V3D2118
V3D1518	V3D2418
V3D1818	

Vanity Cabinets

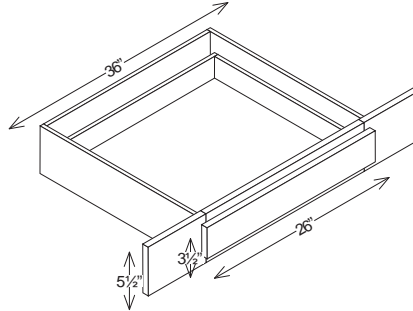
Vanity Sink Front



Double Door

- | | |
|--------|-----------------|
| VSF15 | VSF33B |
| VSF18 | VSF36B |
| VSF21 | VSF39 |
| VSF24B | VSF42 |
| VSF27B | VSF48B (4 door) |
| VSF30B | |

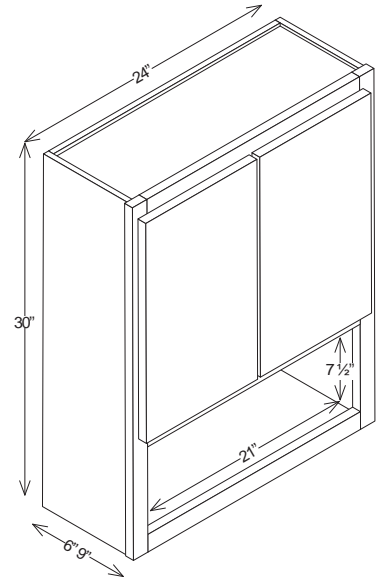
Vanity Knee Drawer



Trimable to 26"

- VK36 (21" Deep)

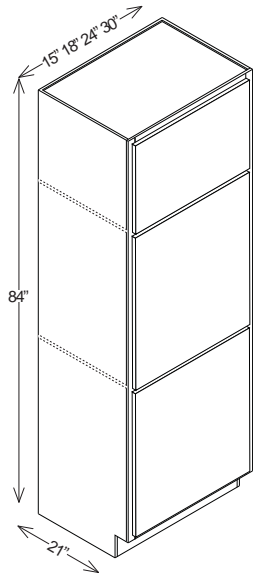
Vanity Wall Boutique



Vanity Wall

- | | |
|----------|-----------|
| VW2430B | (9" Deep) |
| VW24306B | (6" Deep) |

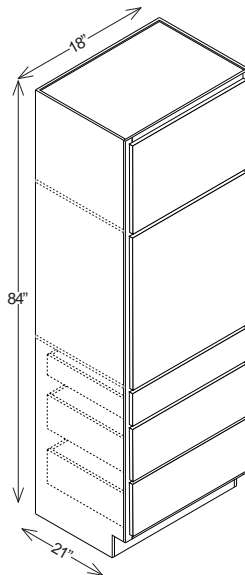
Tall Linen Cabinets



84" High 21" Deep

- | | |
|----------|-----------|
| LT158421 | LT248421B |
| LT188421 | LT308421B |

Rollouts not available in 21" deep linen cabinets



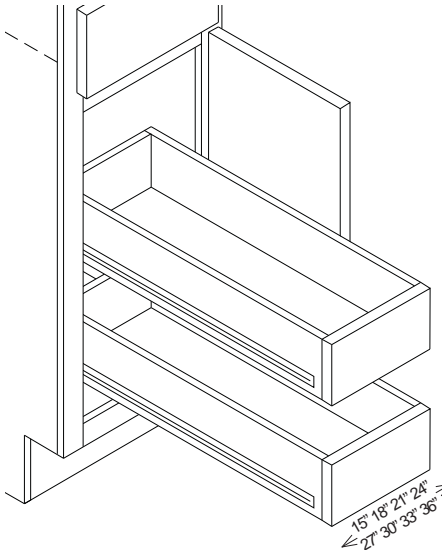
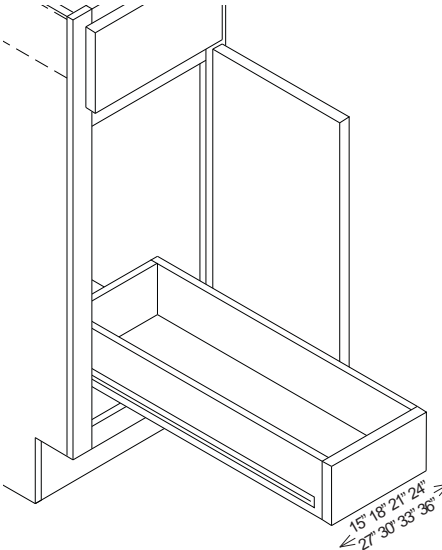
3 Drawer Single Door

- LT3D188421

Rollouts not available in 21" deep linen cabinets

Roll Out Shelves -Single

(for butt door cabinets)

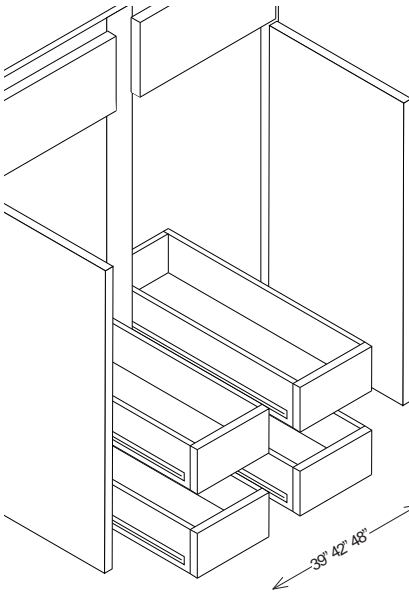
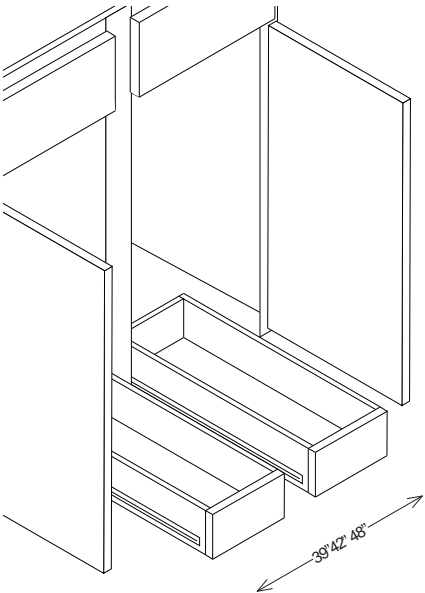


- Single set of 1
- | | |
|--------|--------|
| ROS15S | ROS27S |
| ROS18S | ROS30S |
| ROS21S | ROS33S |
| ROS24S | ROS36S |
- *Ideal for butt door cabinets
**Only available in 24" deep cabinets

- Single set of 2
- | | |
|-------|-------|
| ROS15 | ROS27 |
| ROS18 | ROS30 |
| ROS21 | ROS33 |
| ROS24 | ROS36 |
- *Ideal for butt door cabinets
**Only available in 24" deep cabinets

Roll Out Shelves -Double

(for non-butt door cabinets)

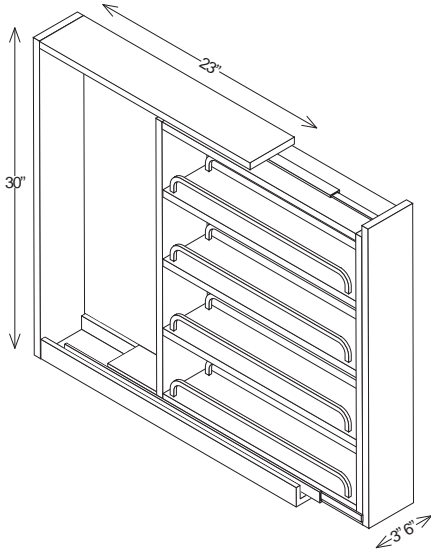


- Double set of 2
- | | |
|---------|---------|
| ROS39SD | ROS48SD |
| ROS42SD | |
- *Ideal for non-butt door cabinets
**Only available in 24" deep cabinets

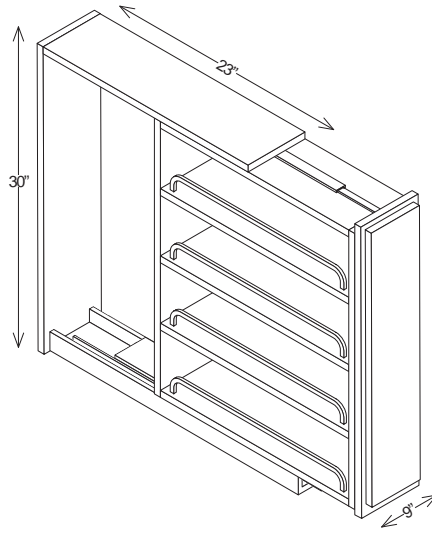
- Double set of 4
- | | |
|---------|---------|
| ROS39DD | ROS48DD |
| ROS42DD | |
- *Ideal for non-butt door cabinets
**Only available in 24" deep cabinets

Accessories

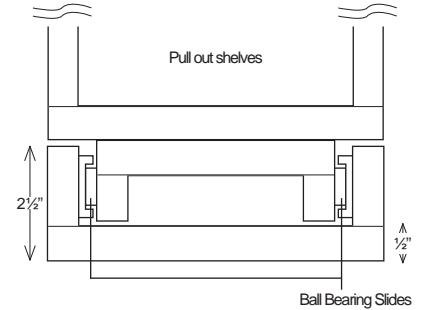
Pull Out Storage Cabinet



Pull out Storage Cabinet
 POSC3 (3" wide)
 POSC6 (6" wide)
 *Must be attached to cabinets on both sides.
 *Unit is not freestanding.
 *False front included, not attached

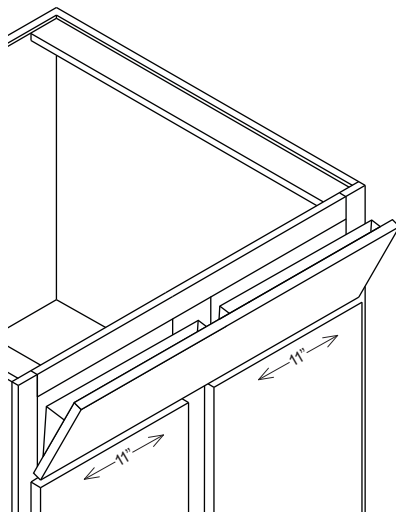


Pull out Storage Cabinet
 POSC9 (9" wide)
 *Must be attached to cabinets on both sides.
 *Unit is not freestanding.
 *False front / frame included, not attached



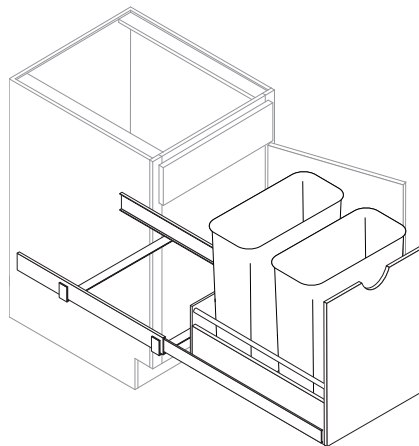
POSC Front Profile

Tilt-Out Sink Trays



Sink Tray - white
 TOST (2 trays, 1 hingeset)
 (11" wide - 9" center for screws)

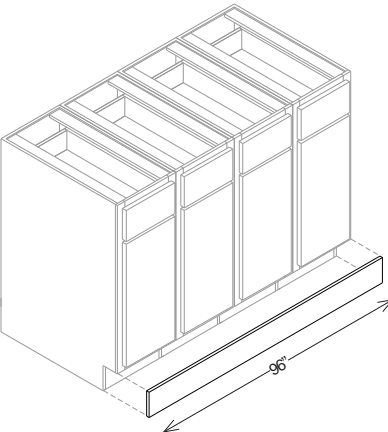
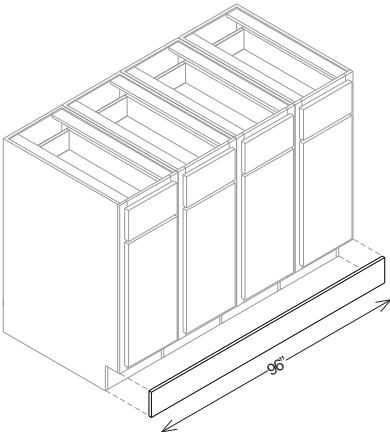
Waste Bins



Double Bin
 BIN2
 minimum opening 18"
 (Recommended for B21 or larger)

Wood Veneer Toe Kick

Laminated Toe Kick



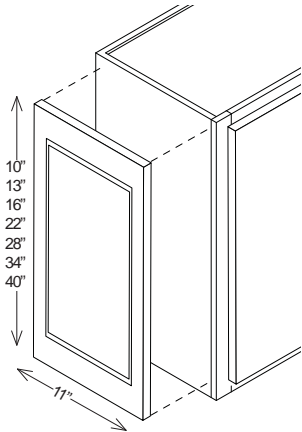
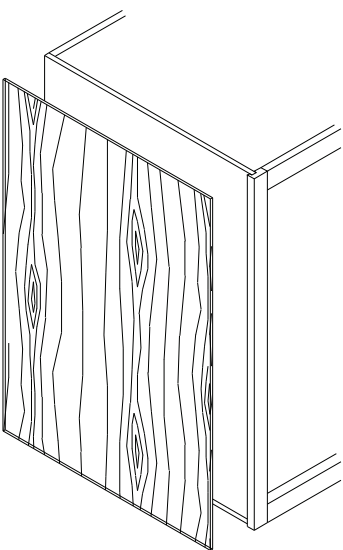
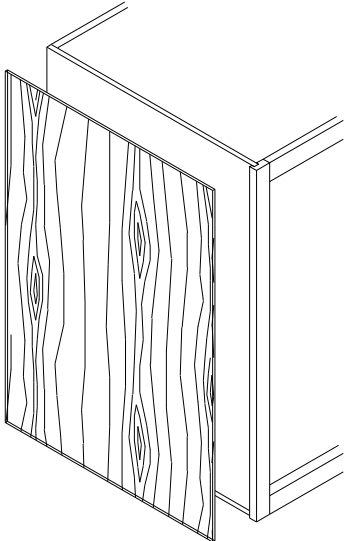
96" Wide	
TK8	(Box of 20)
TK8S	(Single Piece)
TK8SHC	(Handicap)

96" Wide	
TK8L	(Box of 20)
TK8LS	(Single Piece)
TK8LSHC	(Handicap)

Wood Veneer End Skins

Laminated End Skins

Decorative End Panel



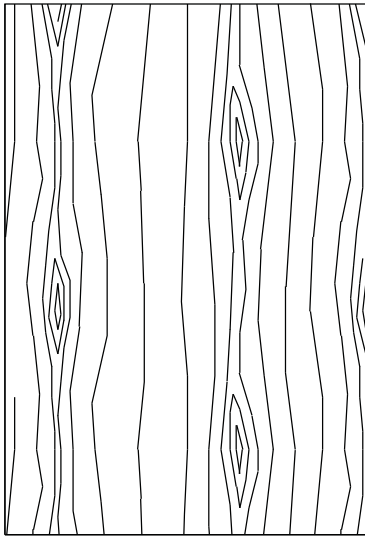
Wood Veneer End Skin	
WES30 (11.25x30)	BES (23.25x34.5)
WES36 (11.25x36)	VES (20.25x31.5)
WES42 (11.25x42)	TES (23.25x96)
(1/4" thick)	

Laminated End Skin	
WES30L (11.25x30)	BESL (23.25x34.5)
WES36L (11.25x36)	VESL (20.25x31.5)
WES42L (11.25x42)	TESL (23.25x96)
(1/4" thick)	

Wall End Panel	
DWP12	DWP30
DWP15	DWP36
DWP18	DWP42
DWP24	
Base End Panel (23x28)	
DBP24	

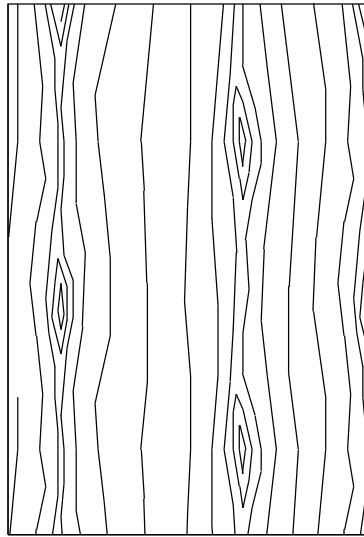
Accessories

Wood Veneer Paneling



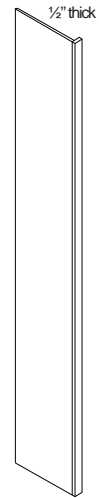
Wood Veneer
 P4896 (48x96)
 P4834.5 (48x34.5)
 (1/4" thick)

Laminated Paneling



Laminated
 P4896L (48x96)
 P4834.5L (48x34.5)
 (1/4" thick)

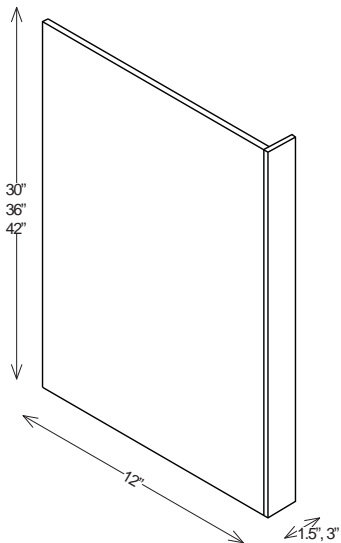
Tall End Panels



Tall End Panels

TEP 1.5x84x12	TEP 3x84x12
TEP 1.5x84x24	TEP 3x84x24
TEP 1.5x90x12	TEP 3x90x12
TEP 1.5x90x24	TEP 3x90x24
TEP 1.5x96x12	TEP 3x96x12
TEP 1.5x96x24	TEP 3x96x24
TEP 1.5x96x27	TEP 3x96x27

Wall End Panels

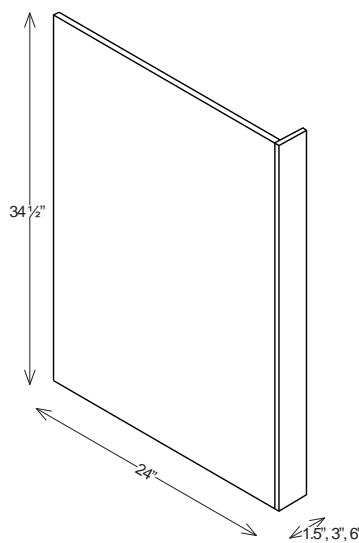


Wall End Panels

WEP 1.5x30	WEP 3x30
WEP 1.5x36	WEP 3x36
WEP 1.5x42	WEP 3x42

(1/2" thick)

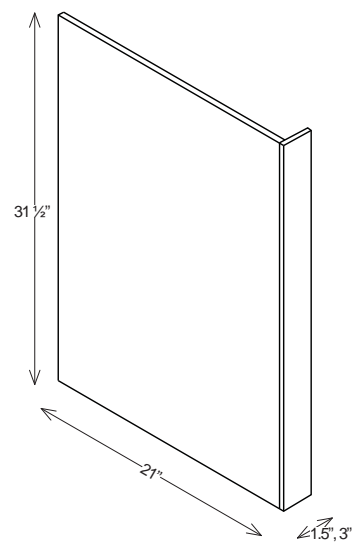
Base End Panels



Base End Panels

BEP1.5
 BEP3
 BEP6
 (1/2" thick)

Vanity End Panels

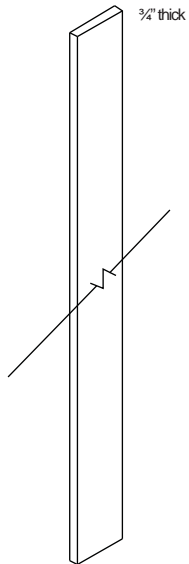


Vanity End Panels

VEP1.5
 VEP3
 (1/2" thick)

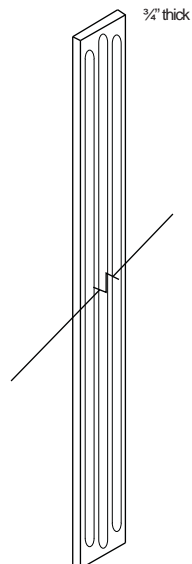
Accessories

Wall / Tall Fillers



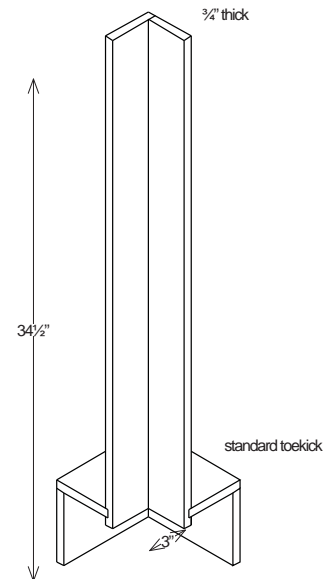
Wall Filler	
WF330	TF384
WF630	TF396
WF342	TF684
WF642	TF696

Fluted Filler



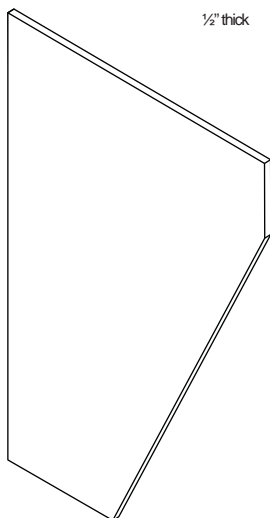
Fluted Filler	
WF330_Flute	
WF336_Flute	
WF342_Flute	

Base Corner Filler



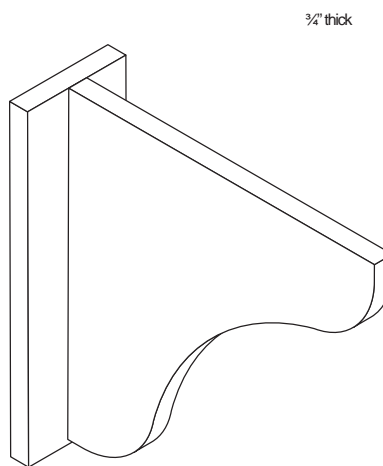
Base Corner	
BCF3x3	

Leg



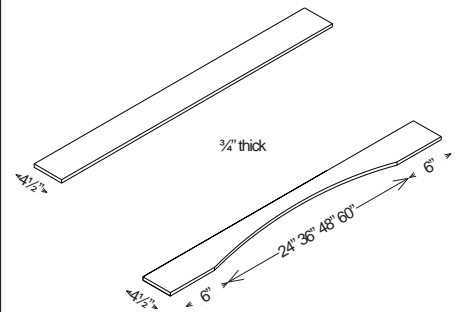
Leg	
BTLEGMI	(24"D x 34 1/2"H)
VTLEGMI	(21"D x 31 1/2"H)
VTLEGHCFMI	(21"D x 32 1/2"H)

Wood Support Bracket



Bracket	
WSB66	
WSB99	
WSB1212	

Valance / Arched Valance



Straight	
VAL36	VAL60
VAL39	VAL72
VAL48	VAL84

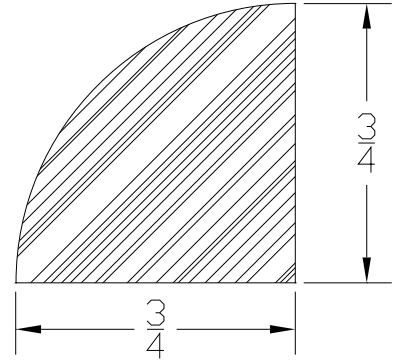
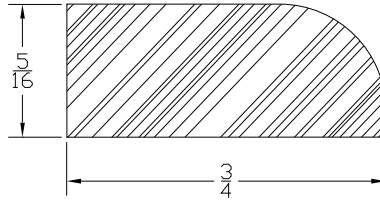
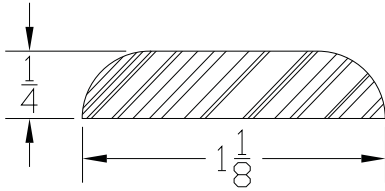
Arched	
A-VAL36	A-VAL72
A-VAL48	
A-VAL60	

Accessories

Batten Moulding

Scribe Moulding

Shoe Moulding



Batten

BM8 (Box of 25)
BM8S (single piece)

Scribe

SCM8 (Box of 25)
SCM8S (single piece)

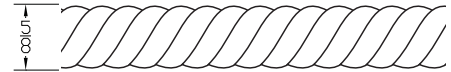
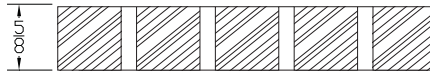
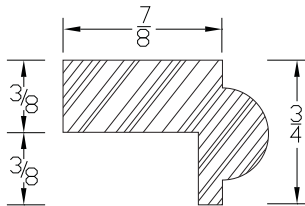
Shoe

SM8 (Box of 25)
SM8S (single piece)

Under Mount Moulding

Dentil Moulding

Rope Moulding



Under Mount

UM8 (Box of 25)
UM8S (single piece)

Dentil

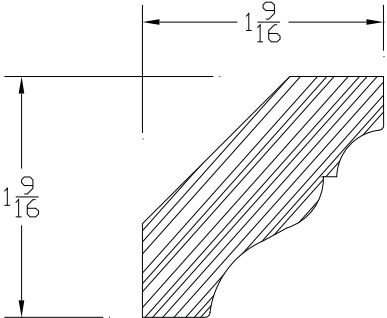
DEN8S (single piece)

Rope

RP8S (single piece)

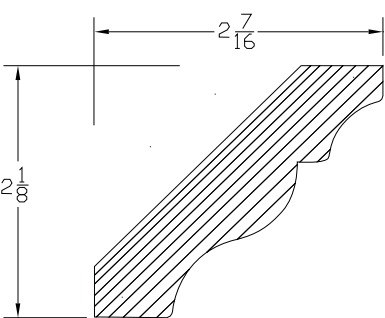
Accessories

Crown Moulding



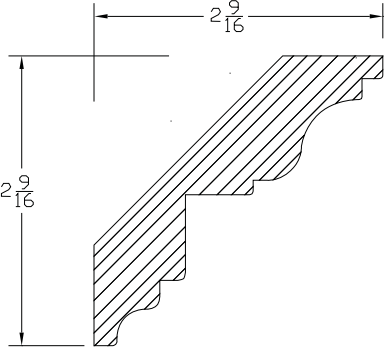
Crown	
CM8	(Box of 10)
CM8S	(single piece)

Large Crown Moulding



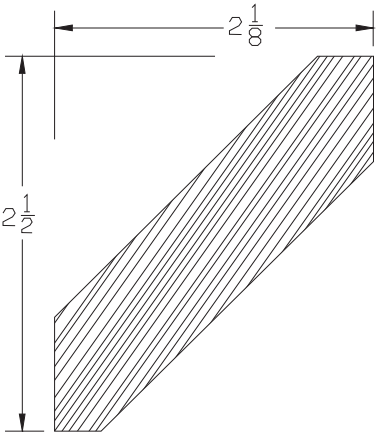
Large Crown	
LCM8	(Box of 10)
LCM8S	(single piece)

Deluxe Crown Moulding



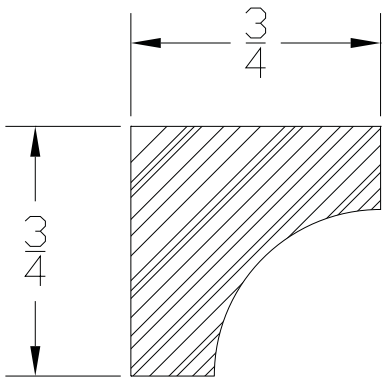
Deluxe	
DLCM8S	(single piece)

Shaker Crown Moulding



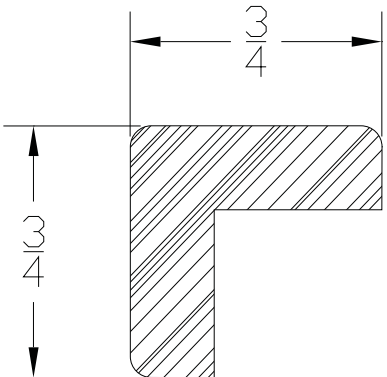
Shaker	
SHCM8	(Box of 10)
SHCM8S	(single piece)

Inside Corner



Inside	
IC8	(Box of 25)
IC8S	(single piece)

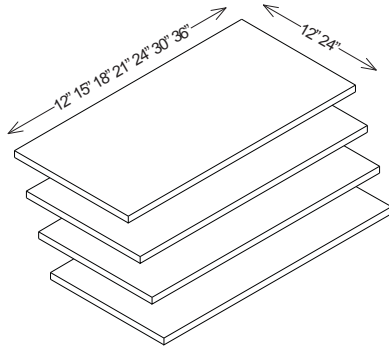
Outside Corner



Outside	
OC8	(Box of 25)
OC8S	(single piece)

Accessories

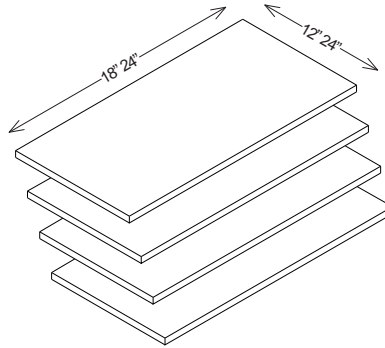
Tall Shelf Kit



Set of 4		
SK 12x12	SK 12x30	SK 24x18
SK 12x15	SK 12x36	SK 24x21
SK 12x18		SK 24x24
SK 12x21	SK 24x12	SK 24x30
SK 12x24	SK 24x15	SK 24x36

DEPTH x WIDTH

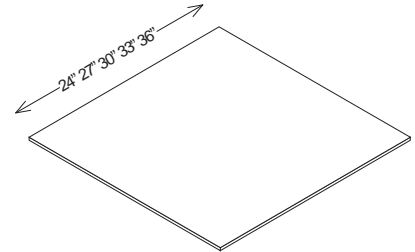
Linen Shelf Kit



Set of 4
SK 21x18
SK 21x24

DEPTH x WIDTH

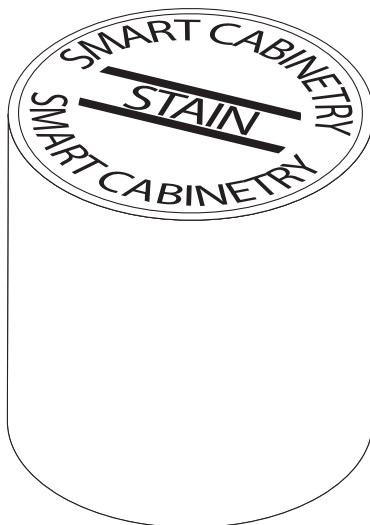
Sink Floor



Floor	
SFF4848	48" x 48"
SFF4896	48" x 96"
SFF4848MI	48" x 48" MI
SFF4896MI	48" x 96" MI

DEPTH x WIDTH

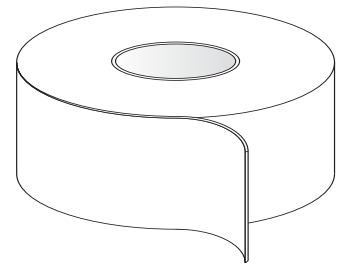
Touch Up



Stains	
QSTAIN	(quart)
TOPCOAT_CAN	(spray)



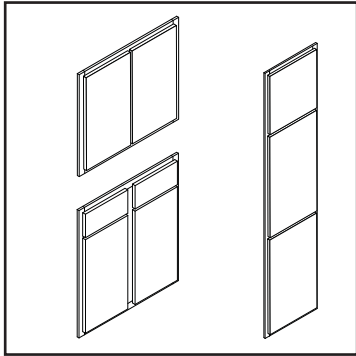
Touch up Kit
TUK



Edge Tape	
EDGE_TAPE_ROLL_1	1" x 150'
EDGE_TAPE_ROLL1_1.5	1 1/2" x 150'
Vinyl - Light Maple, in color matching cabinet interior.	

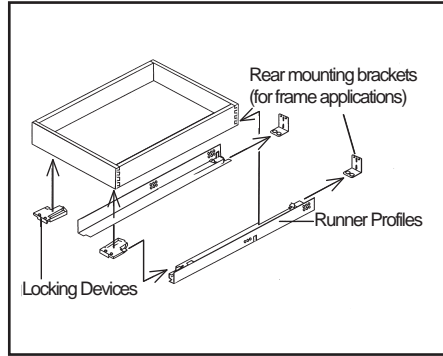
Cabinet Modifications

Door and Face Frame



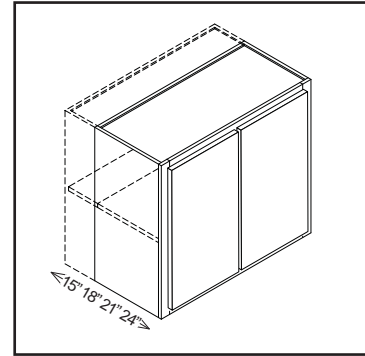
Consists of cabinet frame, door(s), drawer fronts and hinges.

FESC - Full Extension Soft-Close



Soft-Close, Concealed Full Extension Guides are available on base and vanity cabinets.

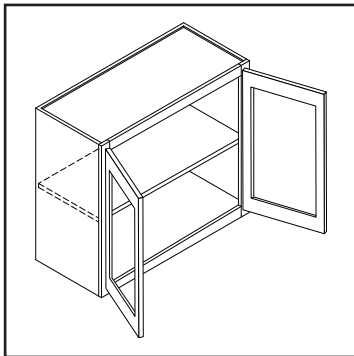
ID - Increase Depth (wall only)



Available on wall cabinets 9" - 36" wide. 3" increments up to 24." Custom pricing applies.

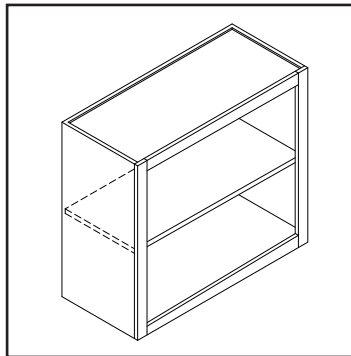
Increase Depth Cabinets MUST be installed between cabinets or end panels of the same depth.

G-PREP - Prepped for Glass



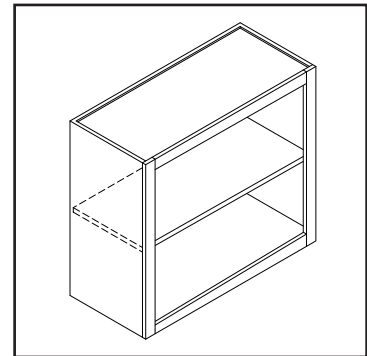
Available on all cabinets. Cabinet door prepped to receive glass insert. Additional cost applies for glass prep

MI - Matching Interior



Available on all cabinets. 1/2" matching laminate shelving (matching) included. Additional cost applies for matching interior.

ND - NO DOORS



Cabinets available with no doors or hinges. Cabinets are priced at raised panel pricing with reduced price.

Cabinet Modifications



Code	Definition	Example
F	Face frame and doors	W1230 F SF 12 VSF 12
FF	Face frame only	B12 FF
B	Butt doors	B24 B
PLY	Plywood cabinet	B12 PLY
HC	Handicap height (32 ½")	B12 HC
BH	Base height to vanity cabinets	VB12 BH
FH	Full height door	B12 FH
ND	No doors	B12 ND
CASE	Cabinet only box	B12 CASE
P	Peninsula cabinet	B24 P
STDTK	Standard toe kick	B12HC STDTK
_PLYA	Plywood construction, powdercoated shelves	B12 _PLYA
_MAX	Plywood construction, treated toekick	B12 _MAX
_ULT	Plywood construction, treated base	B12 _ULT
GPREP	Glass prep. doors	W3030B GPREP
MI	Matching interior	B12ND MI
GPREPMI	Glass prep. + matching interior	W3030B GPREPMI
SH	Shelf (single)	SH 12 (SH Width)
DR	Door	DR 1013 (DR Width Height)
DF	Drawer front	DF 1013 (DF Width Height)
DB**WS	Drawer box (with slides "WS")	DB 10214 WS (DB Width Depth Height WS)
ROS	Roll out Shelf (field install)	ROS 24 (only available in 24" deep)
_ROS	Roll out Shelf (factory install)	B24B _ROS (only available in 24" deep)
18SLIDE SET	Reduced depth Vanity drawer slide	(18" deep)
21SLIDE SET	Vanity depth drawer slide	(21" deep)
24SLIDE SET	Base depth drawer slide	(24" deep)
24BALL_SLIDE SET	Ballbearing side mount drawer slides	(24" deep, 75 lbs)
HINGE	Standard door hinge	(2 qty, 6-way adjustable)
OVER_LAY_HINGES	Full overlay door hinge	(2 qty, 6-way adjustable)
LSHINGE_SIDE	Lazy susan frame hinge	(1 qty, attaches door to frame)
LSHINGE_CENTER	Lazy susan door hinge	(1 qty, attaches door to door)
DRFRONT SCREW25	Drawer front screws	(25 count)
HINGE SCREW25	Door hinge screws	(25 count)
SLIDE SCREW25	Drawer slide screws	(25 count)
SHELFCLIPS 25_75	3/4" thick shelf clips	(25 count)
SHELFCLIPS 100_75	3/4" thick shelf clips	(100 count)

Code Meaning

CC_CHAIN	Color chip chain
DS	Door sample
FFDS	Face frame door sample
MB	Mini base
	MBPLY MBPLYA MB PLY_MAX MB PLY_ULT
SAMPLE_START_KIT	Sample starter kit

Troubleshooting Guide



WALL INSTALLATION CAUTION-

IMPORTANT: It is not advisable to install cabinets wider than 36 inches or deeper than 12 inches on a wall independently. If essential to ones kitchen, the installer of the kitchen must secure the cabinet to a permanent structure, i.e. interior wall.

IMPORTANT: Structural modification of a wall cabinet can significantly weaken the cabinet. For this reason modifications to Smart Cabinetry are not recommended, such as cutting the back to clear wall obstructions. If an obstruction exists, we suggest you first try to use cabinet(s) that do not require modifications. If modification is required, the warranty of the cabinet is void and it is the responsibility of the installer to take appropriate steps to compensate for any loss of strength or support due to the modification.

Soffit exists: Install permanently to a soffit by running four #10 lag bolts 3" in length through the top face frame into the "2x" structure (x4, x6, x8 or larger and a minimum) directly to the overhead structure or ceiling joist.

Soffit doesn't exist: The cabinets must attach to an adjoining cabinet which is affixed to wall or permanent interior structure. If it is at the end of a cabinet run install a tall end panel (TEP) and attach to its frame establishing a "permanent" fixture supporting the cabinet permanently attached to the TEP which is permanently attached to the floor.

Failure to follow these instructions will void all warranties. The result could be the cabinet falling off the wall which becomes a liability not warranted by Smart Cabinetry.

Some problems that may arise during installation can be remedied with the following troubleshooting table.

Problem	Cause	Solution
Doors on a double door cabinet do not line up	•Hinges are in need of adjustment	Adjust hinges until cabinet doors line up properly. Consult www.smartcabinetry.com/hardware for information regarding hardware adjustment.
	•Cabinet is out of square	Loosen screws in back and use shims to make the cabinet plumb. Re-tighten screws. Overtightening screws will damage the cabinet backing. Slowly tighten until the head of the screw is flush with the back of the cabinet.
Door is not flush to the face frame	•Hinges are in need of adjustment	Adjust hinges until cabinet doors line up properly. Consult www.smartcabinetry.com/hardware for information regarding hardware adjustment.
	•Hinge(s) are twisted or bent	Contact your dealer for support.
	•Cabinet door is warped	Humidity levels can cause warpage. Allow door to hang through one heating season. If it remains warped more than 1/4", call your dealer.
	•Cabinet is out of square	Loosen screws in back and use shims to make the cabinet plumb. Re-tighten screws. Overtightening screws will damage the cabinet backing. Slowly tighten until the head of the screw is flush with the back of the cabinet.
Drawer is not flush to the face frame	•Drawer glide is misaligned	Adjust drawer guide until drawer closes flush against frame. Consult www.smartcabinetry.com/hardware for information regarding hardware adjustment.
	•Cabinet is out of square	Loosen screws in back and use shims to make the cabinet plumb. Re-tighten screws. Overtightening screws will damage the cabinet backing. Slowly tighten until the head of the screw is flush with the back of the cabinet.
Lazy susan does not turn correctly	•Lazy susan is out of alignment	Adjust hinges until cabinet doors line up properly. Consult www.smartcabinetry.com/hardware for information regarding hardware adjustment.
Cabinet shelf is sagging in the middle	•Shelf peg is not properly inserted	Adjust pegs accordingly, insert on the back side of the middle wood frame section (center mullion). Use all shelf pegs in their proper positions.
Scratches, nicks, or dents	•Damage occurred during installation	Contact your installer or dealer, touch up kits are available for order through your dealer.
	•Damage occurred during shipping	See page 56, "What if my shipment is damaged?"

Frequently Asked Questions



What is the lead time for my order?

Lead time begins after the 24 hour confirmation review and sign-off process.

15 day lead time	20 day lead time
Brighton	Bradford
Dover	Manchester
Providence	Manhattan I
Sheffield	Manhattan II
Prescott	Bridgeport
Oxford	Newport
Cambridge	Chateau
Lancaster	
Somerset	
Hampton	

How do I care for my cabinetry?

Page 5 of this book includes general care instructions for your Smart Cabinetry cabinets. For more instructions consult our website at www.smartcabinetry.com/cabinetcare

How do I know when my cabinets will deliver?

For the actual date of shipment, please contact the shipping department 3-4 days prior to the build date on your order's confirmation.

How many cabinets can ship on one truck load?

250-300 cabinets or 3,000 cubes are standard for one truckload. (Subject to change according to SKU sizes)

What if my shipment is damaged?

If damage occurs during shipment, upon delivery notify the delivery driver of the damage and request that he/she make a note of the damage on the bill of lading. Sign the Bill of Lading, as proof of delivery; include identified damage noted on signed Bill of Lading. All damaged items need to be accepted by the customer. **Do not reject damaged items.**

Damage claims with will need to be filed on Smart Claims Form prior to shipping replacements. To file a damage claim please fill out claims form in its entirety then email to customerservice@smartcorpllc.com. Include your order number, buyer's name, shipping address and a brief description of damage. It is highly recommended to send pictures of damage along with the claims form. Upon receipt of the claim form, Smart Cabinetry will send a confirming email. Proceed to re-order replacements parts as soon as possible under a different (new) purchase order. Your purchase order will include the necessary information of cabinet or component replaced. Smart Cabinetry cannot be held responsible for any labor costs accrued during the installation of products sold via any of its channels of distribution due to claim. This includes, but is not limited to, items that may be flawed or have become damaged in transit.

Notes: This policy does not cover freight damages or shortages due to shipping of product. Customer must receive product in accordance with Smart Cabinetry shipping and receiving policy, and may be required to submit information verifying the claim. These policies are set by our freight carriers, so failure to comply will result in loss of compensation for the customer.

Shipping Information



The mantra for Smart Cabinetry's Supply Chain driven by transportation and logistics is simple: reduce costs and increase customer satisfaction levels. However, market forces such as higher fuel costs and decreased capacity work to undermine these goals. A number of different modes of transportation exist today within Smart Cabinetry's Logistics Operation. Individual shipments leaving our facility are analyzed for optimization by route and mode of transport. Cost reduction strategies no longer are sufficient as stand-alone strategies. Transportation professionals alike have begun to realize that negotiating lower rates with carriers is only a first step in an effective supply chain and transportation management system. To be successful, we must find ways to reduce costs while maintaining customer service levels. Smart Cabinetry must utilize and reserves the right to utilize creative initiatives that will produce savings and allow us to remain competitive.

Our goal has not changed, optimize our freight in turn, and produce in bound costs savings to customers without reducing service levels. Smart Cabinetry will optimize then analyze to place freight with the most efficient economical mode of transportation. The fundamental practice to drive cost savings, deliver value, and improve operating efficiencies from the various modes of transportation and operational tactics listed below have become very powerful tools employed at Smart Cabinetry.

- Increase use of technology
 - Labels are bar coded to show date built & date loaded.
- Fool proof loading technology
 - Load will show cabinets on truck and left off of truck.
 - Produce % complete
 - Produce items list.
 - Quality load assurance software allowing only applicable cabinets by order on truck.
- Advanced scheduling and routing techniques
 - Advanced continuous Aggregation models in manufacturing (Eliminate more costly LTL shipments)
 - Continuous consolidation and optimization of shipments (Maximize trailer utilization)
 - Continuous moves (Efficient routings using the latest optimization software)
 - Mode Optimization (Understanding the differences in cost and service between alternatives)
 - Lowest cost solution available (Our Goal and Promise to Customers)

Customer Responsibility

Inspect your cabinets upon arrival: All cabinets are subject to numerous quality inspections before leaving our manufacturing facility.

Smart Cabinetry is packaged carefully to prevent damage during the handling and shipping of ones order. Occasionally, damage will occur from our dock to your facility. We ask you to help us help yourself and inspect each cabinet prior to installing or placing in inventory. To help control our costs please perform the following checks when receiving your order:

Receiving Instructions:

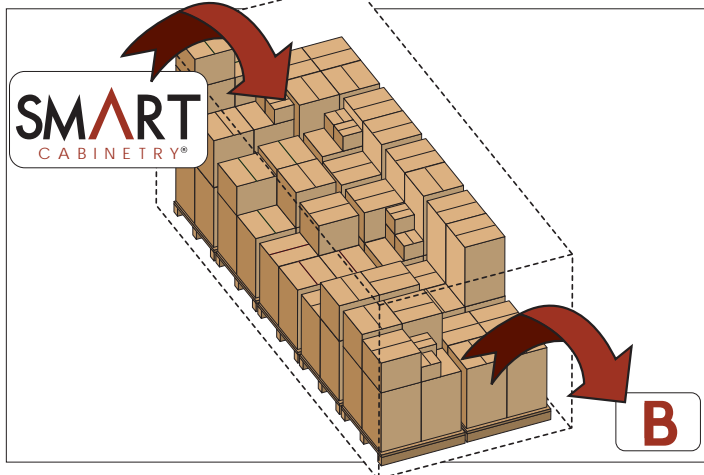
1. Please inspect your cabinets immediately upon arrival.
2. Locate receiving documents from the carrier.
 - Bill of lading (BOL)
 - Item master list
 - Packing list
3. Identify items ordered and count all packages and document on bill of lading (BOL)
4. Valuable information included in Smart Cabinetry Shipping documents:
 - Piece count by SKU
 - Package count
 - % of completion
 - Weight
 - # of Pallets
5. Understand the difference between # of items received and # of packages received. ¹
6. Please sign for piece count, package count, and pallet count received (whichever applies).
7. Smart Cabinetry will not be responsible or liable for misplaced, loss or damaged product once the carrier is provided a clean and clear receipt.
8. Documentation of damage is required on the bill of lading (BOL).
9. Damage claims are submitted on Smart "Claims" form includes pictures stating damage and any statements of condition.
10. Customer must receive product in accordance with Smart Cabinetry shipping and receiving policies. Submittal information verifying the claim is required. Failure to comply will result in loss of compensation for the customer.
11. "Back Orders" (BO) are identified prior to shipping and noted on shipping documentation and product packages. Back Orders will ship 7-10 business days at Smart Cabinetry's expense.
 - Smart Logistics notifies customers prior to shipment via phone, email, or fax.
 - Shortages i.e. doors identified on product package
 - Status updates available by contacting Smart Service via email to customerservice@smartcorpplc.com.
12. Customer requests to alter shipping routes are adhered to when feasible at customers expense. ²

1 Note: Smart Cabinetry will ship multiple pieces (accessories) in single packaged units. Identify total package and piece counts take note of the differences between the two quantities.

2 Note: Customer requests to alter route selection of ones order are adhered to when capability to execute exist. Out of route miles when shipping ones request are considered and billed accordingly.

Modes of Transportation

Truck Load orders



Truck Load (TL) Orders are “full” truckloads of A to B shipments from our dock to your destination. Smart Cabinetry’s Supply Chain including manufacturing, planning, and logistics use an aggregation model to control your costs and deliver the highest level of service. Our manufacturing flexibility to schedule and ship using the latest technology and techniques are far more cost effective than current less than truckload (LTL) models. Aggregation is the creation of a single shipment of multiple orders, originating from Smart Cabinetry to your defined destination that would have otherwise have been released as separate shipments. Smart Cabinetry’s logistical and manufacturing operations create numerous cost savings for our customers.

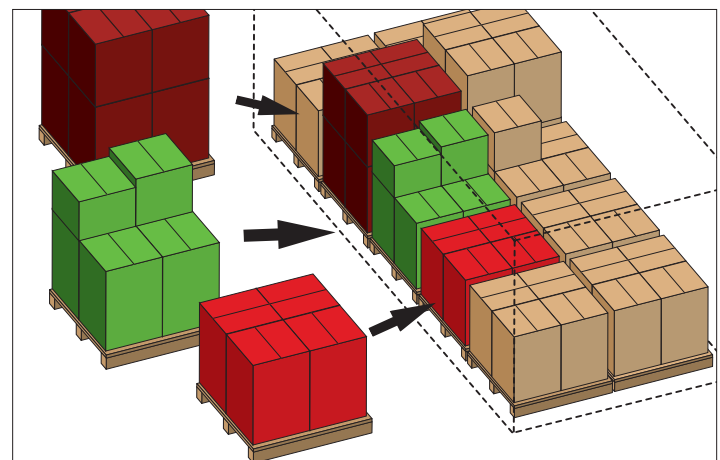
Operational rules used by Smart Cabinetry’s Logistics Department:

- 300 cabinets or 3,000 cubes planned standard. (May vary depending on order i.e. TL of vanities)
- Over-cubed orders are shipped on the next available truck at customer’s expense.
- Invoicing commences at time of scheduled shipment.
- Payment discounts are not allowable on freight.
- Orders stored are done at customer’s expense.
- Customer pick-ups are required to have assets located in yard prior to days operation.
- Customers must schedule managed freight through Smart Cabinetry’s Logistics. Please contact smartlogistics@smartcorp.com.

Multi Stop Truck Loads (MSTL)

Essentially MSTL is defined as one carrier from our facility in New Paris Indiana with multiple customer deliveries utilizing a higher percentage of cubes than full truck loads yet less expensive than less than truckload (LTL) freight. Smart Cabinetry’s Multiple Stop Program utilizes its ability to consolidate their LTL shipments into one truckload for delivery into concentrated geographical areas. The benefit to

Multi Stop Truck Loads (MSTL) continued



our customers becomes an overall shipping program reducing our customer’s costs.

- Greater Asset Utilization
- Increased Service Levels
- Lower Costs than LTL
- Lower Costs than A to B full TL’s
- Increased visibility to delivery times
- Increased load control
- Less Load Damage (while in transport)
- Increased Inventory Control
- Reduced Inventory Carrying Cost
- Payment discounts are not allowable on freight.
- Multiple stops are color coded and numbered by stop on package and shipping documentation.
- Multiple stops are not permissible to single address locations.

Note: Smart Cabinetry reserves the right to load orders, route orders and execute shipments when determined by the lowest cost solution for all orders within a particular load mix. Additional charges incurred due to out of route miles are borne by the customer requesting the change to existing freight solution.

Inter Modal

Inter-modal (IM) shipping is the movement of freight using more than one mode of travel where all parts of the transportation network are effectively connected and coordinated. Smarts IM shipping relationship includes a system of both origin and destinations (for example, Smart Manufacturing Facility to Job Site, Your Facility), as well as the links between them (such as roads or rail). Our inter-modal shipping network includes the use of the thousands of rail lines, trains, and trucks that are connected in a seamless system that are efficient and flexible to meet the needs of our valued customers and cargo.

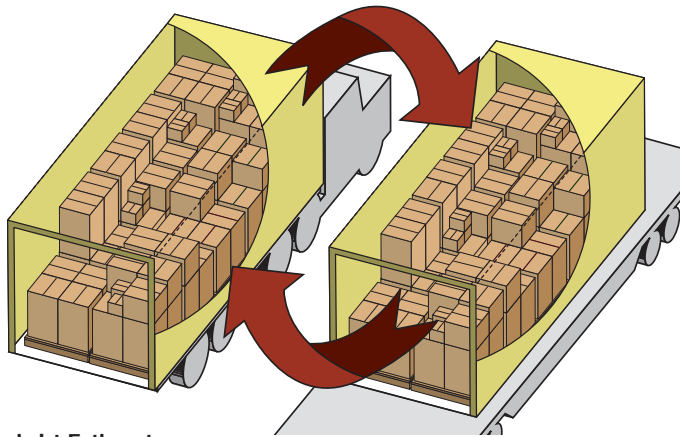
The benefits of IM shipping continue to evolve from our strategic re-

Modes of Transportation



relationship with our logistics partners into an attractive, affordable, efficient and convenient form of transporting freight of Smart Cabinets. Smart Cabinetry's Logistics utilizes Inter-Modal segment to reach customers at a minimum 1,000 miles from our plant. Our logistics partners operate a large fleet of company-owned 53' containers across a nationwide network of rail partners utilizing all major rail lines, anchored by BNSF in the West and Norfolk Southern in the East. IM shipping saves 10-20% compared to shipping by truck only.

- Multi-Drop capabilities exist further lowering the cost of freight.
- 53' foot containers (Same size as dry van trailer)
- Payment discounts on freight are not allowable
- Rail Lines and lanes are subject to availability
- Rail Line capacity subject to seasonal limitation.
- Rail Line pricing at time of shipment
- Plan for additional transit time (2-4 days depending on location)



Freight Estimates

Freight estimates are available upon request. To receive pricing on freight please contact customerservice@smartcorp.com for an updated quote. The variables surrounding the cost of freight include but are not limited to fuel, mode of transport, age of equipment, internal requirements of the carrier, miles, routing and experience of the driver. As stated, Smart Cabinetry utilizes the brightest in logistics resources. Yet, with all that know how behind us there are factors driving your freight week to week. Listed below are the conditions of Smart Cabinetry Freight Quotes:

- Freight Estimates are good for seven (&) business days.
- Freight Estimates are analyzed and quoted by most economical mode of transport
- Inter Modal estimates are given at time of shipment.
- Include LTL accessorial services (see accessorial table) at time of order.

Fuel Prices are based on Department of Energy's Information Administration's weekly report on fuel service charges which provides weekly price data by U.S. regions of regular gasoline and on-highway diesel fuel, with week ago and year ago comparisons.

LTL Orders & Large cabinet orders:

Less than Full Cabinet orders or single pieces larger than 48" at times are shipped on common carriers. LTL cabinets are packaged in individual boxes, banded and placed onto a shrink-wrapped pallet. Large tall cabinets are placed on their backs to an 8-foot pallet shrink wrapped then banded to skid. Cabinets will ship via common carrier using the most economical provider based on both estimated time and price. Contact Smart Customer Service or your Smart Sales Representative for a list of services available to meet your receiving needs. Requirements include:

- Proper removal equipment with fork extensions necessary to unload cabinets safely.
- Cabinets shipped to businesses with or without a loading dock
- Cabinets shipped to limited access sites (construction, multi-unit residential, commercial). Charges apply when not identified up front of the impending environmental conditions.
- Individual must be on site to inspect and sign for shipment.
- Carriers require a 3-4 hour window for delivery.
- Additional shipping and handling charges may occur if unable to deliver.

Small cabinet orders/JCO:

Cabinets will be packaged unassembled in individual boxes shipped via a common carrier. Cabinets can be shipped to businesses with or without a loading dock, commercial residences, and construction sites. If there are any concerns regarding the delivery of our product please contact us as soon as possible. Cabinets received should be thoroughly inspected for damage by the buyer or the buyer's designated recipient. The buyer is responsible for all damage that occurs following receipt of the shipment.

- A \$25 dollar minimum charge applies to all JCO shipments.

Non-Cabinet orders/JCO Accessories:

All small parcel orders not containing cabinets will be shipped via UPS to the shipping address noted on the order. Any concerns regarding your order that may arise from the receipt of Smart Products please contact Smart Customer Service. All shipments should be thoroughly inspected for damage by the buyer or the buyer's designated recipient. The buyer is responsible for all damage that occurs following receipt of the shipment. Allowances will not be made when submitted outside the time permitted.

- A \$25 dollar minimum charge applies to all JCO shipments.

Accessorial Charges



We receive many questions regarding accessorial services and charges. Accessorial charges are fees for performing services beyond normal pick up, transport, and delivery. Accessorial Fees are billed accordingly. See limited information provided below describing accessorial fee based services provided by Smart Cabinetry. Accessorial Fees and type of service provided are subject to change. Accessorial fees will be included in the freight quote when services requested and understood at time of order.

Note: Accessorial Services carry a nominal charge as such it is our customer's responsibility to include the services necessary at time of order. Otherwise, services will be billed as rendered and approved at time of delivery. These fees are due and payable as invoiced.

Truck Division Charges	
Detention – Time	Customers have 2 hours to unload trucks. In/out times delivery MUST BE documented on BOL. Detention time starts after the second hour and billed in 15 minute increments at \$75/hour. It is customer responsibility to have proper equipment and staff levels to adequately unload cabinets in within time limits.***Detention time will be determined using trailer tracking technology.
Circuitous Miles (TL)	When point-to-point rates are published on a truckload dollar basis, the dollar amount will be divided by the miles from origin to destination (excluding all intermediate stops), and the resulting revenue per mile (rounded to the nearest cent) will be applied to all miles
Equipment ordered not used (Canceled Trucks)	A charge of \$1.95 per mile from the last destination to the original designated pickup, subject to a minimum charge of \$250, will apply.
Layover	fee is \$250 per day
Driver assist	will be paid at \$75 per stop. Driver will bring items to the end of the truck.
Minimum Charge	When rates are published on per mile basis and no minimum charge is specified, a minimum charge of \$700 will apply. Point-to-point rates are not subject to the minimum charge.
Stops in Transit	Additional stops in transit will be applied charges of \$50 for the first stop and each stop thereafter. Intermodal loads are subject to the applicable Circuitous Miles charge (see below).
Intermodal Division Charges	
Circuitous Miles (IM)	All mileage beyond the 1st stop will be billed at an additional \$1.95 per mile. Premium Rail Service Rates are based upon standard transit times. If Premium Rail Service is required, an additional charge of \$0.25 per loaded mile will apply.
LTL Schedule B Effective 10/12/2010	
Appointment Notification	\$20 per bill of lading
Corrected BOL	\$10.00
HAZMAT FOR LTL	\$18 Per Bill of Lading
Lift Gate	\$4.00 CWT, subject to a minimum charge of \$65.00 and a maximum charge of \$250.00
Limited Access	Is any \$3.25 CWT, subject to a minimum charge of \$55.00 and a maximum charge of \$175.00
Redelivery for LTL	When a shipment must be redelivered due to no fault of Smart Cabinetry or carrier, the shipment will be assessed a charge of \$4.50 CWT, subject to a minimum charge of \$50.00 and a maximum charge of \$385.00
LTL Storage	Freight not delivered due to no fault of Smart Cabinetry or carrier shall be charged a fee of \$2.00 per CWT per day, subject to a minimum charge of \$35.00 a day and a maximum charge of \$125.00 per day, per vehicle.
The Accessorial Services listed above are the most frequently provided by Smart Carriers. For a complete list contact customerservice@smartcorpplc.com.	

THE ORIGIN, DESTINATION, ZIP CODES, CLASSIFICATION, SHIPPING WEIGHT, AND ANY ADDITIONAL SERVICES THAT MAY BE REQUIRED IN TRANSIT, WILL DETERMINE ACTUAL CHARGES. Rates and additional charges will be determined using our signed rules and accessorial charges in place at the time of pick up. If no signed rules and accessorial charges are in place at the time of pickup, rates will be subject to the J.B. Hunt standard LTL rules tariff 101. Final rates will be calculated based on actual freight characteristics and will be invoiced if additional charges apply. The fuel surcharge will be calculated based on the DOE national average fuel price for the week of pick up. By choosing Smart Cabinetry, you have agreed to the JB Hunt terms and conditions supplied herein.

Claims Instructions



Damage and/or product shortage: Claims are valid when proper documents and documentation submitted and signed by the customer and the transportation company. Documents include Smart Claims Form, Signed BOL, and pictures when possible.

Missing Items Claim: Claims must be made at time of delivery and documented on the bill of lading. Claims can then be made via email to customerservice@smartcorpilc.com. Include Smart Claims Form, a copy of the signed BOL (proof of delivery), and notation of missing item.

Damage Claims: Claims must be made within 24 HOURS OF PRODUCT DELIVERY and documented on the bill of lading (BOL) in addition to a properly filled out Smart Claims Form. Claims submitted

via email to customerservice@smartcorpilc.com. Pictures showing damage are required if possible when submitting request.

Concealed Damage Claims: Claims can be made up to 30 days after receipt of order. Signed BOL's (Proof of Delivery), Smart Claim Form and pictures are necessary to process ones claim. Concealed Damage Claims are defined as requests made greater than 24 hours after original delivery date. Items claimed as "damage" are documented claims made within 24 hours of receipt of goods. Concealed Damage Claims costs are shared "pro-rata" between our organizations. Approved concealed damage claim value is no more or less than 50%. Concealed damages are a 50/50 split shipped at the customer's expense.

SMART CABINETRY Claims Form page 1 of 2 Revised 03/14/2011

Customer Information

Billing NEW PO# Orig. Smart Cof. #
 Customer Name
 Billing Address City State Zip
 Order Sent by Order Date
 Phone Fax

Shipping Shipping address is same as billing address.
 Ship To
 Shipping Address City State Zip
 Shipping Contact Name Shipping Contact Phone

Shipping Method
 Truckload Delivery
 Small Parcel
 LTL / SKID
 Customer Pick-up
 Driver Assist: extra fee
 Requested Ship Date: _____
 Ship with Order # _____

Claim Information

Pictures Required
Via Email for doors or cabinet replacement

- Pictures Included Via Email Concealed Damage 50 / 50 Defective item
 Missing Product (Noted on Bill of Lading) Freight Damage (Noted on Bill of Lading)

Extra fees could incur if proper shipping methods are not placed at the time of order. **Shipping Contact Name and Phone Number** is required for jobsite delivery.

Cabinet components ordered on a Claims Form are processed within **5-7 working days** (quantity of 10 or less). **Cabinets** ordered through a Warranty Order Form will be processed into the next available run schedule. ****Reason for replacement must be marked below.****

No.	Cabinet	Quantity	Hinge (L or R)	Reason for Replacement
01				

cabinet replacement Missing Product (Noted on Bill of Lading) Freight Damage (Noted on Bill of Lading)

Extra fees could incur if proper shipping methods are not placed at the time of order. **Shipping Contact Name and Phone Number** is required for jobsite delivery.

Cabinet components ordered on a Claims Form are processed within **5-7 working days** (quantity of 10 or less). **Cabinets** ordered through a Warranty Order Form will be processed into the next available run schedule. ****Reason for replacement must be marked below.****

No.	Cabinet	Quantity	Hinge (L or R)	Reason for Replacement
01				
02				
03				
04				
05				

www.SmartCabinetry.com 67742 CR-23 New Paris, IN 46553 phone: 574.831.5010
 fax: order entry 866.836.5747 fax: logistics 866.875.5466 fax: payables/ receivables / general 866.539.9080



LIMITED 5 YEAR WARRANTY

Five Year Limited Warranty on Cabinets. Smart LLC, d/b/a Smart Cabinetry warrants to original purchaser for a period of five years from the original date of purchase that all components of Smart Cabinetry shall be free from defects in material and workmanship under normal use. This warranty is only applicable to products used in standard US residential applications and is not transferable.

Should defects in material or workmanship exist during the applicable warranty period in any Smart LLC product, Smart Cabinetry will elect at its discretion to either repair or replace the defective material or component free of charge. This warranty covers only parts and materials of the products supplied by Smart Cabinetry. Not covered under this warranty are counter tops, appliances, plumbing fixtures, etc. or the costs, including labor, to remove and reinstall materials and related components such as fittings, appliances, etc. This warranty shall become void if the cabinets are in any way modified, improperly installed or damaged prior to or during the installation. This also disclaims products utilized in any application other than the standard residential application in the United States. Furthermore, this warranty will not apply to cabinets damaged by misuse, neglect, abuse, acts of God, exposure to moisture, exposure to extreme temperatures or the effects of normal wear and tear.

Natural woods may vary in color, characteristics and exhibit subtle changes as they age. Sunlight, smoke, household cleaners and other environmental conditions may also affect the color match over time. These variations are considered to be the nature of the material in relation to their environmental exposure and are not covered under this warranty. Smart Cabinetry's five year limited warranty shall become void from the improper use of household chemicals. Alkaline based detergents, ammonia, ammonia based cleaners, vinegar, strong solvent cleaners, mineral spirits, paint thinner or any other harsh cleaning chemical including citrus, citrus based or acid based cleaners or abrasive cleaning products severely affect the finish of a Smart Cabinet.

Smart Cabinetry reserves the right to alter design, specifications and materials without obligation to make similar changes to products previously manufactured. Periodically Smart Cabinetry will change the design, specifications, and materials, as conditions require and improvements developed without obligation to make similar changes to products previously manufactured. The repair(s) or replacement(s) are contingent upon the current product offerings of styles and construction options within the Smart Cabinetry Product Line at the time of the warranty claim. If a warranty claim is filed after a product has become obsolete, or has undergone design, specification or material changes, we reserve the right to honor the warranty in one of the following manners:

1. To replace the affected component with a new component of the same style.
2. To replace the affected component and any other component(s) in the residential application to achieve a uniform appearance with a current and comparable product style to the originally purchased style.

If components are replaced, Smart Cabinetry cannot guarantee the finish of these replacements will exactly match the finish and

appearance of the components in the residential application due to the changes that occur during hardwoods natural aging process. Imperfections are part of its inherent natural beauty. Wood varies in color and characteristics that exhibit subtle changes as it ages. For example, white-painted face frames will eventually have visible seam lines at the joint areas, and individual cabinet wood species will darken or lighten with time. Imperfections are not the result of manufacturing ones cabinets, Smart Cabinetry's Limited 5 Year Warranty will not cover differences in color, grain and natural variations including but not limited to those "character" imperfections indigenous to the species of hardwoods used by Smart Cabinetry nor does it cover possible differences in color when adding new cabinetry to old.

Smart Cabinetry does not warrant the installation of "stand alone" or independent cabinets in widths greater than thirty- six inches and depths greater than 12" inches. All cabinets regardless of design, dimension or shape must be affixed to "studs", permanently fastened to interior wall, floor or ceiling joists attached to permanent structures i.e. interior partition wall or floor. **IMPORTANT:** Structural modification of a wall cabinet can significantly weaken the cabinet. For this reason modifications are not recommended, If modification is required, the warranty of the cabinet is void and it is the responsibility of the installer to take appropriate steps to compensate for any loss of strength or support due to the modification. *** SEE INSTALLATION INSTRUCTIONS

THIS WARRANTY IS THE EXCLUSIVE WARRANTY OF SMART CABINETY AND IS IN LIEU OF AND SMART CABINETY DISCLAIMS ALL OTHER WARRANTIES, EXPRESSED OR IMPLIED, INCLUDING THE IMPLIED WARRANTIES OF MERCHANTABILITY AND FITNESS FOR A PARTICULAR PURPOSE.

This warranty applies only to products manufactured or supplied by Smart Cabinetry. Any interpretation herein other than written is unwarranted.

This warranty applies only to products used in US residential applications and is not transferable to subsequent owners. This warranty supersedes all previous warranties from date of issuance. This Warranty constitutes the exclusive remedy against SMART Cabinetry for alleged defects in materials and workmanship.

This warranty gives you specific legal rights and you may have other rights, which vary from state to state. Some states do not allow the exclusion or limitation of incidental or consequential damages, so the above limitations or exclusions may not apply to you.

To obtain replacement(s) under Smart Cabinetry's Five Year Limited warranty, first contact your authorized Smart Cabinetry dealer or distributor, who will arrange for inspection of the cabinet. A dated sales receipt as proof of purchase is required to obtain benefits from this warranty.

If you have difficulty obtaining assistance, please write: Smart Cabinetry, 67742 CR 23 Division Street New Paris Indiana 46553. Phone: (574) 831-5010 Fax: (574) 831-5018 or Email customerservice@smartcabinetry.com.



Smart Cabinetry®
2011 Cabinet Specifications Guide

